



# Paston College

For entry September 2026



# Welcome to Paston College!

**We are here to support and work with you as you move towards your chosen future. Whatever your aims and aspirations, Paston College is committed to helping you achieve them.**

At Paston College, we put you in control of your future. We offer you the best opportunities to learn and succeed in your course, gain experience of work, and progress beyond college. This could be going on to study for a degree, getting a job and starting your chosen career, securing an Apprenticeship, or simply growing in confidence and independence.

Whether you want to follow an academic pathway or take one of our technical and vocational courses, including our T Levels, you will find a course at Paston College to suit you. If you are unsure about what course is right for you, come and talk to us. Our experienced and friendly course advisers are here to help.

Everything at our college is set up to help you reach your desired destination. We have expert staff who are not only committed teachers but who bring a wealth of industry knowledge into our technical and vocational subject areas. Your learning will take place in superb professional standard facilities, and our strong links with hundreds of local and national employers ensures outstanding preparation for the world of work – with invaluable opportunities for high quality work experience along the way.



We also understand that you want to enjoy your time at college, and Paston College is very different to being at school. You will be treated as an adult and given real independence and responsibility for your learning. With an active Students' Union, on-site cafés to socialise in, and a range of extra-curricular activities on offer, there's lots of opportunities to socialise alongside your studies.

If you've not visited us already, we look forward to welcoming you so that you can discover for yourself all that Paston College has to offer. We pride ourselves on being an inclusive college, so come and get a feel for what it's like to study here and ask us any questions you may have.

**Jerry White**  
Principal

## Contents

Your study options	4
Explore A Levels at Paston College	6
Three colleges	8
About Paston College	10
Subjects	13
Academic and Vocational Progression	86
A+ Programme	88
How to apply	90
What will my day look like?	92
College facilities	94
English language and maths skills	96
Success stories	98
Supporting your studies	100
Travelling to college	102
Campus map	104
Work and industry placements	106
Student life	108
Ways of Working	109
All college courses	110
Adult courses	115
Access to Higher Education	116
Degrees	117
Connect with Paston College	118
Open Events	119

*All information included in this prospectus is correct at the time of print in August 2025 but subject to change. For the most up-to-date information, please visit our website at [www.paston.ac.uk](http://www.paston.ac.uk)*

## Subjects

Art	14
Biology	16
Business	18
Business Management and Administration	20
Chemistry	22
Computing	24
Core Maths	26
Creative Media	28
Criminology	30
Drama and Theatre studies	32
Early Years Practitioner	34
Education and Early Years	36
English Language and Literature	38
English Literature	40
Environmental Science	42
Film Studies	44
Further Maths	46
Geography	48
Graphic Communication	50
Health and Social Care	52
History	54
Inclusive Learning	56
Information Technology	60
Law	62
Maths	64
Media Studies	66
Philosophy and Religion	68
Photography	70
Physics	72
Politics	74
Psychology	76
Sport Science	78
Sociology	80
Textiles	82
Extended Project Qualification	84



# Your study options

We understand how important it is to find the best route for you after leaving school. It is important to think about the subjects you enjoy, how you like to learn and where you want to progress to after college.

There are four main options you can choose from after your GCSEs, with different qualifications available to study at each of our campuses at Paston College, City College Norwich and Easton College.

## Which route is for me?

### A Levels

At Paston College and City College Norwich Sixth Form Centre

A Levels are a popular choice for those aiming for university. They provide in-depth study in specific subjects, with students typically choosing three subjects to make up a full-time programme over two years. Each A Level is equivalent to a Level 3 qualification and provides UCAS points. A Levels are assessed by exams.

### T Levels

At Paston College, Easton College and City College Norwich

T Levels blend academic study with practical learning, with a big emphasis on providing in-depth industry experience. They include an industry placement of around 45 days, providing valuable experience in the workplace where employers get early sight of the new talent in their industry. They are equivalent in size to three A Levels, and you will be assessed through a combination of exams and employer-set projects. Many T Level students progress to university or onto higher level apprenticeships.

### Apprenticeships

At Easton College and City College Norwich

An apprenticeship is a job where you will earn, combining work with training and study. You will usually spend one day a week at college and the rest with your employer. Apprenticeships start at Level 2 and go all the way up to degree-level, so you can start straight from school or later in your learning journey. You will need to find an employer to take you on as an apprentice, with many actively hiring, it's a simple step in the process. Find out more about applying for an Apprenticeships [www.ccn.ac.uk/apprenticeships](http://www.ccn.ac.uk/apprenticeships).

### Career-focused qualifications

At Paston College, Easton College and City College Norwich

Technical and vocational qualifications such as BTECs offer a blend of classroom study and practical learning. You will choose one subject to study full time, and each subject focuses on a specific job or employment area, such as health and social care, childcare or business. The level you start on will depend on the grades you achieve at school. While there may be some written exams, these courses also involve practical assessments, coursework, and work-based evidence.

For some students who are not yet at the stage to access wider college courses or have barriers to learning or employment, alternative routes are also available. These can support you to move into wider college courses, apprenticeships and employment. These include:

### Inclusive Learning and MINT

Paston College, Easton College and City College Norwich

Designed to help you plan for the future and progress onto your chosen next step. Our courses are divided into four pathways to help you settle into college and prepare for living in your community, going out to work or progressing onto further college courses. Find out more on page 56.

### English for Speakers of Other Languages

City College Norwich

To help develop your speaking, listening, reading, writing and grammar skills before progressing onto your chosen pathway. Find out more: [www.ccn.ac.uk/esol](http://www.ccn.ac.uk/esol)

### Need help deciding what to apply for?

Our Advice and Guidance team can talk through all the options with you. Get in touch by emailing [pastoninfo@ccn.ac.uk](mailto:pastoninfo@ccn.ac.uk) or call 01603 773773. You can also speak to them at one of our Open Events!

### Aspire Skills Academy

City College Norwich

Choose from two pathways where you can either experience taster sessions in your chosen vocational area and prepare to progress to further study, or develop your employability skills and prepare for the world of work. These courses have several enrolment points throughout the year, for more information speak to our Advice and Guidance team.

### Academic Progression

Paston College and City College Norwich

Where you will study new or additional GCSEs to help you develop your skills and gain the grades you need to progress to your chosen pathway the following year. This programme can also support you to retake your English and maths GCSEs if you didn't quite achieve the grades needed. Find out more on page 86.



# Explore A Levels at Paston College

**A Levels are a popular choice for those aiming to study at university. They provide in-depth study in specific subjects, with students typically choosing three subjects to make up a full-time programme completed over two years.**

A Levels are a full-time programme of study at Level 3. You will need to study a combination of three subjects over a period of two years. Although the largest proportion of our A Level students progress onto university, many also pursue a career in the world of work or choose to complete an Apprenticeship.

A Levels at Paston College cannot be combined with other vocational or technical courses which form a full-time programme of study.



## Overall A Level entry requirements

You will need to have a strong GCSE foundation to be prepared for this next level of study which is why you must achieve our overall Sixth Form entry requirements. You will need to have achieved two GCSEs at grade 6 or above and three GCSEs at grade 4 or above.

Many of our A Level subjects also have their own specific entry requirements which can be found on each of our course pages. You also need to achieve these to study that course. These will be discussed with you at your interview.

## Need help deciding what courses to apply for?

Our Advice and Guidance team can talk through all the options with you, discuss the grades needed and support you to find the most appropriate combinations of subjects based on your aspirations after college. Get in touch by emailing [pastoninfo@ccn.ac.uk](mailto:pastoninfo@ccn.ac.uk) or call **01603 773773**. You can also speak to the team at one of our Open Events!





# Three colleges with the widest offer



**Working in collaboration, Paston College, Easton College and City College Norwich offer the widest range of courses across Norfolk. Providing A Levels, technical and vocational qualifications, T Levels, Apprenticeships, degrees and more, our three distinct campuses provide the opportunity for students to learn in the environment most suited to them.**

**Each year we support around 10,000 students, including 1,500 apprentices and 800 learners with an education, health and care plan (EHCP). We pride ourselves on being an inclusive college, led by experienced and specialist staff.**

## Here's a taste of what each of our colleges have to offer:



### **Griffon Theatre – Paston College**

Home to our performing arts and drama courses and The Paston Far East Theatre Company, the Griffon Theatre boasts the latest digital sound, lighting and production technology, a cyclorama and movable seating to enable 'in the round' style theatre.



### **Scarburgh Science Centre – Paston College**

Paston College has an outstanding reputation in science. £1.5m was invested into the Scarburgh Science Centre to provide students with state-of-the-art facilities and expanded lab space, all built to industry standards.



### **Construction Skills Hub – City College Norwich**

The £4.4 million Construction Skills Hub, opened in March 2025, features two large plumbing and electrical workshops across two floors. Each workshop has 10 practical bays and large central workbenches. The hub plays a key role in training the next generation of electricians and plumbers to meet the growing demand for skilled workers.



### **Digi-Tech Factory – City College Norwich**

A unique facility that is purpose-built for teaching the latest digital skills, from coding and hardware to advanced manufacturing, animation and games design, media production, construction and engineering design.



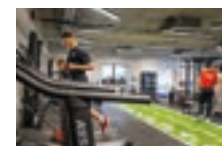
### **Health Wing – City College Norwich**

Our modern hospital ward features lifelike simulators providing healthcare students with opportunities to develop their skills in patient care. The Health Wing also has a 3D anatomy visualisation and virtual dissection table, which is one of very few in the country.



### **Animal Management Centre – Easton College**

Approved as an educational member of the British and Irish Association of Zoos and Aquariums (BIAZA), our centre gives students the chance to work with small mammals, reptiles, birds, and endangered aquatic species.



### **Centre of Excellence for Sport – Easton College**

Following a £1.7m refurbishment, our Sports Centre includes upgraded fitness suites, an outdoor leadership classroom, and a sports performance lab. These complement our Equestrian Centre, 3G pitches, and Tennis Centre with eight indoor hard courts and four European red courts used for international events.



### **Easton Farm and Estate – Easton College**

160 hectares of nature-based teaching space managed with conservation, sustainability and environmental considerations, including a mixed farming system with beef, sheep and cereal production which complement each other.



# About Paston College



**419**  
years

of history. Paston College was founded in 1606 by Sir William Paston



Wide variety of subject choices and qualification routes including A Levels, T Levels and vocational courses with high achievement rates



One in three Norfolk students aged 16 to 18 study across City College Norwich, Easton College and Paston College each year

Each year

**Oxbridge**

welcomes students from Paston College

Around

**25%**

of students progressing to university are accepted at the UK's leading universities each year



A Students' Union to represent the voice and interests of students with opportunities to represent your peers as a member of the Executive Officer team



An outstanding reputation in science with the dedicated Scarborough Science Centre featuring industrial standard laboratories



Rated Ofsted 'Good' following an inspection in November 2024, with our provision for learners with high needs rated 'Outstanding'



# Subjects

**Art**

**Biology**

**Business**

**Business Management  
and Administration**

**Chemistry**

**Computing**

**Core Maths**

**Creative Media**

**Criminology**

**Drama and  
Theatre studies**

**Early Years Practitioner**

**Education and Early Years**

**English Language  
and Literature**

**English Literature**

**Environmental Science**

**Film Studies**

**Further Maths**

**Geography**

**Graphic Communication**

**Health and Social Care**

**History**

**Inclusive Learning**

**Information Technology**

**Law**

**Maths**

**Media Studies**

**Philosophy and Religion**

**Photography**

**Physics**

**Politics**

**Psychology**

**Sport Science**

**Sociology**

**Textiles**

**Extended Project  
Qualification**



Scan the  
QR code to  
learn more

# A Level Art

Through this course you will build on your skills and develop as an artist through the process of research and experimentation. You will deepen your understanding of art - reflecting upon, and questioning how to think about and make art - and at the end of the course you have the opportunity to exhibit your work in a professional gallery setting in the Paston Art Show

## What you will study

In your first year you will keep a work journal (sketchbook), develop ideas and analyse the work of a wide range of artists. You will explore painting, printmaking, sculpture and experimental image making, using non-art materials and research into the work of artists. This is all geared towards helping you arrive at a finished piece of work that can be hung in an exhibition.

The second year of the course is designed to help you strengthen and deepen your own area of interest and specialism. The work you will do will reflect your own interests and what you want to go on to study after A Level, be this architecture, fashion, textiles, art and much more besides.

Trips and visits also play an important part in the course, with previous trips including visits to the Tate Modern, The Royal Academy, Amsterdam, and Berlin. To get a better idea of what sort of work we make and the exciting trips we go on, follow [@pastonart](#) on Instagram or visit [www.behance.net/pastoncollege](http://www.behance.net/pastoncollege).



## Why study Art at Paston?

You will have access to four specialist workshops with professional software, screen-printing, darkroom and painting facilities. We also have great display spaces and make full use of this at our annual art show.

We have visiting artists, including past students, who come in to talk to our groups about the careers and pathways that are available within the creative industry. Strong features of the course include portfolio preparation, the support we give to students with UCAS applications, regular visits to art galleries in London and Europe, and preparing for the prestigious Paston Art Show.

## Where your course can take you

Many students each year go directly on from Paston College to university or art school to continue their study of art. Students have gone on from this course to become illustrators, designers, architects, gallery workers and photographers. If you have a career in mind that involves art and design, we can help you on your way.

## Entry requirements

Grade 4 or above in GCSE art. If you did not take art at GCSE, you must have a portfolio approved at interview. You also need to meet the overall A Level entry requirements, listed on page 6.





Scan the  
QR code to  
learn more



# A Level Biology

Biology seeks to define the fundamentals upon which all living organisms base their existence, while seeking to understand the pressures that give rise to a multitude of specialised forms. This engaging and inspiring course will advance your biological understanding and in the process help you to make sense of a wide range of contemporary issues, from genetic modification, to advances in drug therapies and climate change

## What you will study

Between 'aardvark' and the 'zika virus' there are about 30 million different kinds of living organism, yet in spite of this incredible variety, many features of their structure and biochemistry are surprisingly similar. In the first year of Biology you will build on the knowledge you have gained from studying GCSE science and will explore fundamentals such as cell structure, biological reactions, enzymes and DNA. You then explore how a range of organisms are adapted to carry out gas exchange, digestion, and transport of nutrients and gases.

In the second year you will explore further new themes, many of which build on the core concepts learnt in the first year. You will develop your understanding of the energy transfer from plants to animals in food chains and the concept of ecosystems, supported by a field trip to measure biodiversity. You will also develop understanding of human physiology such as the nervous and endocrine systems.

You will learn through a combination of taught lessons and practical work, with three external written examinations at the end of the course. Additionally, your practical work will be internally assessed leading to a practical endorsement qualification alongside your A Level grade.



## Why study Biology at Paston?

Lessons are taught in a well-equipped modern laboratory. This includes DNA technology equipment which will allow you to carry out experiments in molecular biology such as PCR.

You will also benefit a field trip to Winterton Dunes, a rare example of sand dune succession, as well as trips to nature reserves and zoos.

## Where your course can take you

You could progress to a wide range of degree courses. Studying biology can lead to careers in medicine, veterinary medicine, forensic science, science journalism and ecology. You will develop transferable analytical and practical skills which are valued by employers and relevant for a variety of careers.

## Entry requirements

Grade 6 or above in GCSE biology or additional science and grade 5 or above in GCSE maths. You also need to meet the overall A Level entry requirements, listed on page 6.





Scan the  
QR code to  
learn more

# A Level Business

Are you curious about how businesses are created, how they grow, and what makes them successful? A Level Business is an exciting and dynamic course that will give you a unique insight into the world of work

## What you will study

During this course you will discover how businesses operate and learn about their key elements and essential business functions. You will study business in a variety of contexts - large, small, UK focused, global, service and manufacturing. You will look at how businesses make decisions, the competitive environment, external influences such as ethical and environmental decisions, how technology is changing the way businesses operate and how statistical data and figures help businesses make decisions.

You will learn about financial performance, human resources, leadership, marketing, operations, and managing strategic change. If you enjoy using figures and statistics, looking at the bigger picture and the business world in a more analytical sense and evaluating the impact business theories can have on the business environment, then this course is for you.

## Why study Business at Paston?

Studying an A Level in Business will develop your critical thinking, problem-solving, and analytical skills. You will gain insights into entrepreneurship, leadership, and innovation. And at the end of your course, you will be prepared for a wide range of careers or further study in business, economics, law, marketing, and management.

## Where your course can take you

Previous students have gone onto university to study courses as diverse as accountancy, law, business, marketing, human resources, event planning and management as well as joint courses combining business with, for example, a language.

You could also progress onto an Apprenticeship, with career opportunities in areas such as retail, customer service, banking, sales, marketing, administration and becoming an entrepreneur.

## Entry requirements

Grade 4 or above in English language. A grade 5 in maths GCSE is an advantage due to the mathematical elements of the course. You also need to meet the overall A Level entry requirements, listed on page 6.







Scan the  
QR code to  
learn more

# T Level in Business Management and Administration

**Our T Level in Management and Administration is a Level 3 course that aims to provide you with the knowledge, skills and behaviours to be successful in the business environment. The course will provide you with the opportunity to learn both within the classroom and also in a workplace through a 315-hour industry placement over the two years**

## What you will study

Over the course of the two years, you will study the core elements that form the basis of any business - from what businesses are and how they are formed, to finance, HR, project management, and business behaviours. All important for the success of any business in any industry.

In the second year you will continue to work on the knowledge, skills and behaviours that underpin success in any industry, while developing your team leadership and management skills as a speciality. You will focus on managing and developing teams and individuals, building relationships, and making effective business decisions.

You will also complete 315 hours of industry placement. The standout benefits of this qualification are the combination of classroom learning and real-world experiences through your placement, all of which will be further enhanced by enrichment opportunities such as trips, visits and guest speakers.

Previous students have felt this combination of learning opportunities has better developed their understanding of what they would like to do after college, as well as providing a focus on the key knowledge, skills and behaviours needed to succeed in their course assessments and industry placements.

## Why study T Level Business at Paston?

The learning environment is reflective of a business boardroom where you can work with your peers effectively, take notes and engage fully with the classroom-based learning. You will also have access to PCs with the required software for your assessments for the qualification.

Previous enrichment opportunities have included trips to Norwich, Cambridge, Bury St Edmunds and London, guest speakers from the UEA, University of Edinburgh, NS Cyber and The Bank of England, and the opportunity to work closely with and visit businesses including Norfolk Library Services, John Lewis, and North Walsham Men's Shed.

## Where your course can take you

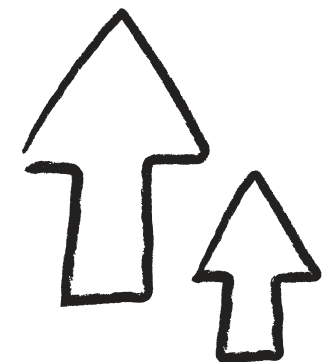
Former students have progressed onto university study in subjects such as business management, marketing, and accountancy. Others have secured places on Degree Apprenticeships with employers including McDonald's, Morgan Sindall and Norfolk Constabulary.

You could study a BA (Hons) Leadership and Management degree, a Chartered Manager Degree Apprenticeship or a CMI Higher Apprenticeship through City College Norwich Higher Education.

The course will also prepare you to go directly into full-time employment, with some of our past students being offered jobs by their industry placement employer, or gaining employment in a range of areas including retail, customer service, banking, sales, marketing and administration.

## Entry requirements

Five GCSEs at grade 4 or above, including GCSE English language and maths, or have completed a Level 2 Business programme with a Merit or above, with GCSE English Language and GCSE mathematics at grade 4 or above, and a successful interview.





Scan the  
QR code to  
learn more

# A Level Chemistry

Chemistry investigates how and why substances react together and how these can be used to enhance our lives – for example the development of medicines and food production. It is a core science, where you will develop descriptive, analytical and strong problem-solving skills, providing you with an excellent grounding in the three main areas of the subject: physical chemistry, organic chemistry and inorganic chemistry

## What you will study

During your first year you will study atomic structure, chemistry calculations, structure and bonding, chemical equilibria and reaction rates, oxidation and reduction, patterns and trends in the Periodic Table, and organic chemistry.

In the second year you will build on and develop your skills and understanding to look at how studying reaction rates can be linked to understanding how reactions take place, organic chemistry, the fundamental laws of energy change, how chemical reactions can be used to give electrical energy and the design of electrochemical cells. You will also explore the pH scale in more depth, develop an understanding of equilibria and why transition metals are good catalysts and have coloured compounds.

Each week you will be tasked with classroom-based work which you will back up with independent study to reinforce the knowledge and skills covered. Some topics involve more practical work than others and experiments are a key part of the course; there are important skills and competencies you will develop to make you a more proficient practical chemist.

## Why study Chemistry at Paston?

The chemistry laboratory was recently refurbished, creating an excellent environment with a wide range of specialist technical apparatus to help your study at A Level. Trips in recent years have included visiting the Royal Society Summer Science Exhibition at the Royal Society in London, providing an excellent opportunity to engage with a range of current, cutting-edge research.



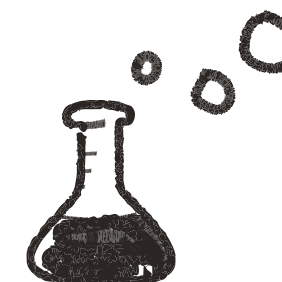
## Where your course can take you

Chemistry is essential if you aim to study chemistry, medicine, veterinary science, dentistry or pharmacy at university and extremely useful for the biological sciences. It is also an excellent preparation for an extensive range of scientific and non-science careers.

As a successful chemistry student, you will be able to think, understand abstract ideas, make connections between different concepts and solve problems. You will also be able to communicate clearly, both in writing and using maths. You will develop a very wide and in-depth skill set - this explains why it is a sought-after A Level for admission to courses such as medicine and is a widely valued qualification more generally.

## Entry requirements

Grade 6 or above in GCSE chemistry or additional science and grade 5 or above in GCSE maths. We recommend you take this subject alongside at least one of the following A Level subjects: biology, maths and physics. You also need to meet the overall A Level entry requirements, listed on page 6.







Scan the  
QR code to  
learn more



## Level 3 Computing

Computer technology impacts almost every part of our lives and this new Level 3 AAQ course has been designed to reflect the demands of today's rapidly changing computing environment. This course needs to be taken alongside two A Levels or one A Level and a second AAQ qualification

### What you will study

This course includes a practical focus supporting you to develop critical thinking skills to problem solve and develop software. You will explore how to safeguard information systems and examine human-computer interaction.

You will cover four units to give you a firm grounding in computing. You will explore programming fundamentals, computer network security and encryption, human-computer interaction, and practical programming. The first two units will be assessed through exams, while the others will be completed through assignment work. Assignments consist of several tasks you perform to demonstrate both your knowledge and practical skills for that topic.

### Why study Computing at Paston?

Our computing room features both high specification computers with large screens that are used for programming and software development, as well as older computers which you can take apart and set-up to form small networks. We also have a number of Single Board Computers and microcontrollers.

Throughout the two years you will hear from visiting speakers sharing their experience and go on a trip to the Centre for Computing History in Cambridge. You will also have the chance to learn from local employers about computing-based career opportunities, such as Aviva, Norfolk Police and Farrows who have previously delivered talks and workshops for students.

### Where your course can take you

This qualification could support you to progress to a computing degree or an Apprenticeship. You could also move into employment in roles such as a software developer, business analyst, systems analyst, network engineer, web developer and software tester.

### Entry requirements

Five GCSEs at grade 4 or above, including maths and English language.







Scan the  
QR code to  
learn more

# Level 3 Core Maths

Core Maths is designed for students who want to continue developing their maths skills beyond GCSE but are not taking A Level Maths. This qualification focuses on real-world applications of maths, helping you become a confident problem-solver in both academic and everyday contexts, and supporting you in future study or employment. Core Maths can be studied in addition to three A Level subjects

## What you will study

Core maths builds on GCSE maths with a sharper focus on problem-solving skills by considering and tackling maths in meaningful contexts. This includes financial applications of maths, as well as further statistical ideas that can support work in other subjects such as psychology, sciences, geography, sociology, and even history.

Over the two years of the course, you will study statistics and algebra, probability and estimation, data analysis and modelling, sequences and growth, financial planning and management, collaborative problem-solving approaches and techniques, and using technology and spreadsheets. The course is assessed through two exams, each worth 50%.

## Why study Core Maths at Paston?

The content of the course has been specifically selected to support the A Level subjects you can study at Paston College. Students currently studying Core Maths have found it gives them confidence to better understand the mathematical requirements for their A Level courses.

Core Maths has received wide endorsement and recognition from employers such as Nestlé, Barclays, CrossRail, McDonalds, the British Chambers of Commerce, and many others.

## Where your course can take you

You will be able to apply the enhanced practical skills you have learnt in an array of business and financial contexts.

Core Maths also provides valuable preparation for university-level study in a wide range of subjects. The qualification has the same UCAS points as an AS Level.

## Entry requirements

Three GCSEs including maths at grade 4 or above and two GCSEs at grade 6 or above.







Scan the  
QR code to  
learn more



# Level 3

## Creative Media

**This practical and varied course provides you with the techniques to create media content and engage audiences across a wide range of products, while developing your understanding of media's influence on society. It's a great step towards studying a media-related degree at university and building a career in one of the UK's fastest growing and most important industries – spanning social media, film, television and streaming services**

### What you will study

Over the two year course, which is equivalent to studying three A Levels, you will develop the underpinning knowledge and skills needed for a future career in the media sector.

You will investigate the media industry and explore how it is influenced by technology and audiences. You will develop research skills through your investigations and study how to analyse and deconstruct media representations and develop the communication and planning skills that allow ideas to be produced.

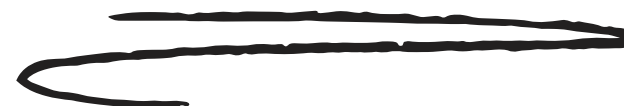
Central to all of this is a practical production component. You will explore a wide range of production areas including film editing, short film, documentary, advertising, photography, music video, radio drama, multi-media campaigns and promotional videos. You will leave the course with a sophisticated understanding of creative practical production techniques and the critical theory which underpins all aspects of the industry.

### Why study Creative Media at Paston?

We have many facilities here to support you on the course, including cameras, sound recording equipment, lighting and green screen facilities. We have two editing suites, and all our PCs have access to Adobe Creative Suite applications including Premiere Pro, Photoshop, and After Effects. You will also have access to the college theatre, which we use for studio style filming and lighting workshops.

We regularly have guest speakers come into college to talk to our learners from the creative industries, such as TV and film directors, to give a contemporary insight into current projects.

Our course has offered many exciting trips over the last couple of years to support your learning in the classroom, including trips to the Berlin Film Festival and New York.



### Where your course can take you

You may wish, like many of our students, to continue your study of media and can do so locally, with Norwich University of the Arts and the UEA or further afield at institutions such as Bournemouth, Greenwich, Goldsmiths, Leeds, or Westminster.

Alumni from our creative media course have gone onto work in areas such as social media, cinematography, video editing, sound recording, animation, camera operation, photography, sports journalism, and in advertising.

### Entry requirements

Four GCSEs at grade 4 or above, including English language and maths.





Scan the  
QR code to  
learn more



**Level 3**

# Criminology

This course provides a stimulating grounding in the study of crime and criminal behaviour, combining elements of psychology, law and sociology. You will have the opportunity to develop practical and academic skills through applied learning, with opportunities to learn from practitioners in the criminal justice sector. This course needs to be taken alongside two A Levels

## What you will study

In this course you will study two units, starting with changing awareness of crime where you will explore different types of crime, how crime reporting affects people's perceptions of crime, and how campaigns are used to elicit change. As part of your work for this unit you will plan a campaign for change.

During the second unit, on criminological theories, you will learn about the difference between crime and deviance, different perspectives within criminology (biological, sociological and psychological), and examine the causes of different types of crime, as well as the factors that drive policy change.

## Why study Criminology at Paston?

This is an Applied General qualification which means it is designed primarily to support students progressing to university. It offers exciting and interesting experiences that focus learning through applied methods. Your knowledge and understanding will be brought to life through a focus on authentic case studies. Topics include the changing awareness of crime, criminological theories, crime scene to courtroom, and crime and punishment. The flexibility of the course will enable you to specialise in your individual area of interest.

## Where your course can take you

The qualification can support your progression to a range of related degree courses, such as criminology, law, psychology and sociology, as well as courses that combine criminology with another social science discipline. It will also give you the required understanding and skills to be able to consider employment within the criminal justice system, for example with the National Probation Service, the Courts and Tribunals Service, or the National Offender Management Service.

## Entry requirements

Two GCSEs at grade 6 or above and three GCSEs at grade 4 or above.







Scan the  
QR code to  
learn more



# A Level

# Drama and Theatre Studies

Learn how to deconstruct, analyse, interpret and perform play texts from a wide range of influential writers, while having the opportunity to devise your own original piece of theatre with our drama and theatre studies course

## What you will study

During this course you will develop movement, vocal, communication and characterisation skills as well as learning how to use drama related language and terminology. Alongside this, you will have the opportunity to study plays from the point of view of a director, designer, performer and critic. You will learn about theatre history and look in detail at the work and theory of significant theatre practitioners.

You will need to enjoy watching and participating in live theatre and to be articulate in your writing and in the spoken word. You also need to be tenacious and patient when rehearsing for your live shows. It is essential that you are a team player as you will be working in teams for most of the course – having a good sense of humour helps too!

You will take part in two public performances: one will be scripted and the other will be put together by you and your classmates, based on a set theme or topic. There will also opportunities to develop additional skills in workshops on topics such as stage combat, puppet making, lighting operation and budgeting for performance companies.

Classes are high energy and physical with a combination of both group work and the development of individual skills. Assessment is through practical work, performance, coursework and written examination.

## Why study Drama and Theatre Studies at Paston?

We have a multi-functional theatre space that seats up to 150 people. You will have access to the state-of-the-art sound and lighting equipment supported by a resident stage manager and stage technician.

We organise visits to local, regional and national theatres to see live theatre productions as part of the course. Previous trips have included visits to the National Theatre in London to see 'Twelfth Night', the Wolsey Theatre in Ipswich to see 'Dial M for Mayhem' and Norwich Theatre Royal to see Gecko's production of 'Kin'.

We also regularly have visits, workshops and talks from industry experts – recent examples include an RSC actor, international set designer, a writer and West End director, and a BBC executive and documentary film maker.

## Where your course

## can take you

Successful completion of this course can help you progress onto a degree-level course at college, drama school or university in a performance-related subject. The skills you develop on this course can also help you access a range of future career opportunities including director, actor, designer, playwright, stage management, theatre management, theatrical agent, technician, broadcasting, media presenting, arts journalism, education, drama therapy and scriptwriting. Skills you develop on this course are also beneficial for any role that is public facing.

Alumni include students who now work professionally as actors having graduated from Royal Central School of Acting, The Bristol Old Vic, LAMDA and East 15, as well as students who are now working as professional lighting, sound or stage managers.

## Entry requirements

Grade 5 or above in GCSE English language and, if you studied drama at GCSE, a minimum of grade 5. You also need to meet the overall A Level entry requirements, listed on page 6.





Scan the  
QR code to  
learn more



## Level 2

# Early Years Practitioner

If you are interested in a rewarding career nurturing, supporting, and educating young children during their most crucial developmental stages, this course could be for you. It's ideal if you want to become a nursery practitioner, teaching assistant, or continue into further studies in early childhood education. You'll gain the knowledge, skills, and confidence to make a positive impact in children's lives

## What you will study

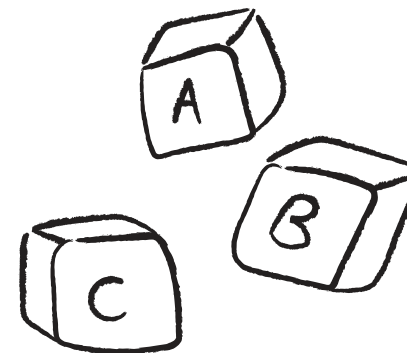
This course will support you to develop your knowledge, understanding and skills when caring for and supporting the learning and development of children under the age of twelve. You will cover a range of units including child development, play and learning, legislation and nutrition.

This is a two-year course where you will study not only the diploma, but also study additional professional qualifications including safeguarding, basic food hygiene and paediatric first aid. You will have the time to learn the theories and practise the practical application of becoming an early years practitioner.

You will be assessed through written coursework and placement observation, and at the end of the course you will have achieved the competencies required to be included in ratio.

## Why study Early Years at Paston?

Our team have strong links with nurseries and primary schools across Norfolk and Suffolk, offering year-round industry placements and sharing their considerable experience to support your learning and professional practice.



## Where your course can take you

You could progress onto higher level study or move into a supervised job role as a teaching assistant or early years educator. You may also consider an apprenticeship to further your training and experience. Career opportunities include a primary school teacher and play therapist, childminder, nanny or holiday entertainer.

## Entry requirements

Four GCSEs at grade 3 or above, including English language. You will also need to have achieved maths GCSE at grade 2 or above.

Completion of a DBS check is required for all students to allow you to work with children in an early years setting as part of your industry placement.







Scan the  
QR code to  
learn more

# T Level in Education and Early Years

This course is perfect for those who have a clear aspiration to work with children. It will provide you with the perfect start to your journey into the education, early years and childcare sector, giving you the opportunity to work alongside local nurseries and primary schools to develop your understanding of children's care needs, learning opportunities and developmental progression

## What you will study

This T Level qualification will provide you with the knowledge and skills needed to progress into skilled employment within the education and early years sector.

You will cover the core knowledge, understanding and skills relevant in education and early years, such as behaviour, child development, equality and diversity, parents, families and carers, and safeguarding. In addition, you will develop the knowledge, skills and behaviours required to work in an early years setting, such as supporting and promoting children's play, development and early education, developing relationships with children to facilitate their development, planning and providing and reviewing care, play and educational opportunities.

As part of the programme you will complete 750 hours in an early years setting where you will gain hands-on experience. You will have the opportunity to apply the theoretical knowledge you learn in the classroom, to your practical placement experiences and in turn, reflect on how these experiences shape your understanding.

## Why study Education and Early Years at Paston College?

The course is taught by highly skilled and experienced industry professionals, who are on hand to teach and support you to become a qualified early years education professional. We have regular guest speakers and recruitment opportunities from universities, local organisations and charities to help you learn more about early years careers and plan your next steps.

## Where your course can take you

You can go directly into employment in roles including teaching assistant or early years educator. You could also progress onto Higher Education, which could lead onto graduate opportunities such as primary school teacher and play therapist. You could also study a degree with City College Norwich Higher Education. We offer a variety of degrees including BA (Hons) Childhood and Youth Studies, BA (Hons) Youth Work, BA (Hons) Additional Needs and Disabilities (Children and Young People) and a Youth Worker Degree Apprenticeship. Other employment options include childminder, nanny and holiday entertainer.

## Entry requirements

Five GCSEs at grade 4 and above, including English language and maths. Completion of a DBS check is required for all students to allow you to work with children in an early years setting as part of your industry placement.





Scan the  
QR code to  
learn more

# A Level English Language and Literature

English Language and Literature challenges the whole concept of 'literature'. You will explore a diverse range of prose, poetry and drama, from contemporary music videos like Beyonce's 'Lemonade' to Shakespeare's plays and sonnets

## What you will study

You will learn the skills and language needed to analyse any text, whatever its genre, audience and purpose. We place texts in context and explore highly topical contemporary ideas such as feminism, post-modernism and post-colonialism.

You will initially learn the textual analysis skills which underpin the whole two-year course, exploring concepts such as lexical choices, grammar, syntax and phonology. You will use a variety of texts to do this: poetry, novels, drama, music, adverts and videos. You will then have the skills to analyse texts including Truman Capote's *In Cold Blood*, Diane Samuels' *Kindertransport*, Shakespeare's *Much Ado about Nothing* and Alice Walker's *The Color Purple*.

In the non-exam assessment unit, you will study the ever-popular gothic genre. You will read *Frankenstein* with the class, with a great range of texts for you to choose from for your second novel, including *Wuthering Heights*, *Dracula* and the short stories of Angela Carter. You will also get the chance to write two pieces of gothic creative writing – this course really is diverse and interesting!

## Why study English Language and Literature at Paston?

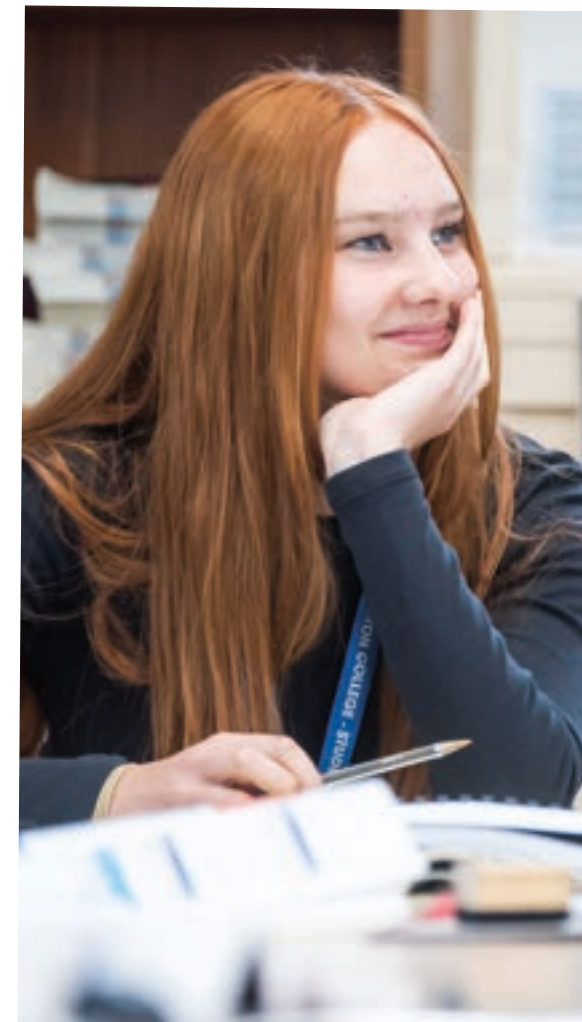
Lessons are engaging, diverse and fun and will take you outside of the classroom to experience theatrical productions. Previous students travelled to London to see Tom Hiddleston perform in 'Much Ado about Nothing' at Covent Garden - a brilliant experience highly valued by learners.

## Where your course can take you

This course will provide you with a range of skills such as communication, analysis and written accuracy that are valuable for any future career path. You can progress to a range of English-based degree courses and careers including creative writing, journalism, screenwriting, teaching and speech therapy.

## Entry requirements

Grade 4 or above which in English language. We also advise taking English language and literature alongside at least one other subject which involves extended writing. You also need to meet the overall A Level entry requirements, listed on page 6.







Scan the  
QR code to  
learn more

# A Level

## English Literature

This course will provide you with the opportunity to explore an exciting variety of literary texts from the seventeenth century to the present day. You will read a wide range of poems, novels and plays, learning the skills of close textual analysis, using evidence to support and develop arguments, and expressing ideas clearly and accurately

### What you will study

As part of this course you will study two units. The first, drama and poetry pre 1900, involves Shakespeare's *King Lear*, his most brutal tragedy, dealing with power, the family, violence, and madness. You will also read Christina Rossetti, widely regarded as the most significant woman poet in England before the twentieth century. You will look at these poems alongside John Webster's macabre tragedy *The Duchess of Malfi* (1612-13), a terrifying piece of writing about the consequences for a woman who tries to control her own sexuality, featuring murder, incestuous desire, severed body parts, and a man who believes he's a wolf.

For the second unit you will study the way the immigrant experience has been represented in prose fiction. You will focus on Mohsin Hamid's *The Reluctant Fundamentalist*, a disturbing and provocative post 9/11 thriller, and Jhumpa Lahiri's *The Namesake*, a family saga looking at the effect of immigration on two generations of an Indian family transplanted to America.

These units are exam-assessed and each is worth 40% of your final mark. You will also complete a coursework unit (worth 20% of your final mark) where you will write two essays on literature post-1900. The first will be a small-scale piece focusing on close analysis of a short text; while the second will involve textual comparison and work on context.

### Why study English Literature at Paston?

Studying English Literature will compliment other essay-based subjects available at Paston College. You will be given some freedom to choose your own material for the coursework-assessed unit. Recently students have chosen to write about the poetry of Eavan Boland, plays by Shelagh Delaney, Caryl Churchill and Stephen Beresford, and prose fiction by Sally Rooney, Zadie Smith, Colm Tóibín, Jeanette Winterson, and Bernadine Evaristo.



### Where your course can take you

This subject is an excellent grounding for undergraduate study and is seen as a strong component of any university or job application. Former students are now working as journalists, actors, teachers, speech therapists, university academics, police officers, and in IT, PR and retail, or completing further study.

### Entry requirements

We recommend you take English Literature alongside another essay-writing subject. You also need to meet the overall A Level entry requirements, listed on page 6.





Scan the  
QR code to  
learn more



# A Level Environmental Science

**This course builds a strong understanding of the relationship between humans and the environment. You will learn how the Earth works, how we depend on it, how our actions impact it, and how we can live more sustainably. It fosters responsibility for the planet and gives you the skills to help tackle challenges like climate change**

## What you will study

You will spend the first year studying topics related to living and physical environments. These topics allow you to explore why life exists on earth and develop a deep understanding of biodiversity and ecosystems. You also study the impact that humans have on the atmosphere. In the second year, you will learn about the challenges that the Earth's growing population has created. Topics will include energy resources, pollution, agriculture, fishing and aquaculture, forestry resources and sustainability.

## Why study Environmental Science at Paston?

The course will give you the opportunity to practice methods used by professional environmental scientists. This includes lots of laboratory work as well as three fieldwork days, which are currently in the Norfolk Broads, at Winterton-on Sea, and on the North Norfolk coast.

You will be taught in a dedicated laboratory by a specialist teacher and have access to equipment such as moth traps, aerial insect nets, and water-quality testing equipment.

## Entry requirements

Grade 5 or above in GCSE science, chemistry or biology, and grade 5 or above in GCSE maths. You also need to meet the overall A Level entry requirements, listed on page 6.

## Where your course can take you

This subject is a great starting point for university study in environmental science and related subjects. You can study a BSc (Hons) Wildlife and Conservation degree through City College Norwich Higher Education at Easton College. It can lead to a wide range of career paths, including environmental engineering, sustainability officer, environmental consultant, air pollution analyst, wildlife biologist, geoscientist, and environmental lawyer – as well as roles in fields like ecology, meteorology, oceanography, and conservation.







Scan the  
QR code to  
learn more

# A Level Film Studies

If you love film and are interested in studying a wide range of different types from blockbusters to indie, foreign language films and experimental cinema, this course is for you. This creative course will encourage you to watch, analyse, discuss and write about films from different perspectives



## What you will study

As part of this course you will study critical approaches to films which will engage you with a range of philosophical debates around cinema from psychoanalytical to postmodernist.

Following the Eduqas syllabus, you will focus on The Hollywood film history (Alien, Captain Fantastic, Vertigo) and movements (German Expressionism), along with the opportunity to study a range of critically acclaimed contemporary films such as: Memento, Promising Young Woman, Under the Skin, Little Women, Joker, and La La Land.

You will also learn about European and world cinema including Pan's Labyrinth, Portrait of a Lady on Fire, Wild Tales, and City of God. Additionally you will study documentary and experimental film such as Exit Through the Gift Shop (by Banksy), and Asif Kapadia's Amy.

Alongside this you will learn to apply what you have learnt by shooting and editing tasks throughout the year. Workshops in creative writing, cinematography, lighting, sound, and editing will hone your film production skills so that in the second year you will produce either a short film, or screenplay with photographed storyboard, as part of your coursework.

Written exams will make up 70% of your final grade while the remaining 30% will be coursework that focuses on completing either a short film or screenplay.



## Why study Film Studies at Paston?

We have two fully-equipped and up-to-date editing suites, a specialist technician to support production work, and a classroom with large cine screen projection.

Every two years we run a residential trip to New York with excursions to the Museum of Moving Image, NBC studio Tours, Radio City, and a tour of Film and TV locations. On the other years we run a residential trip to the Berlin Film Festival where in addition to film museums and historical sites, you will go to screenings and Q&A sessions, and red-carpet star spotting - previous stars spotted include John Malkovich and Steven Spielberg.

## Where your course can take you

You can go onto study a range of degree level courses in subjects such as film making, VFX or other arts subjects or consider studying critical subjects such as English, politics or sociology. This course can also support you in your progression to a wide range of careers in the creative industries.

## Entry requirements

Grade 5 or above in GCSE English language and, if you studied film studies at GCSE, a minimum of grade 5. You also need to meet the overall A Level entry requirements, listed on page 6.





Scan the  
QR code to  
learn more



# A Level Further Maths

Further Maths provides a great opportunity for enthusiastic mathematicians to broaden and deepen your subject knowledge. It's ideal if you enjoy maths and are considering studying a degree in maths, physics, engineering, computer science, or economics

## What you will study

This course builds on the knowledge of A Level Maths and involves the further study of pure maths as well as optional units of statistics, mechanics or working with algorithms.

You will study a variety of topics based around some overarching themes - core pure, mechanics, statistics and modelling with algorithms. You will also focus on mathematical argument, language and proof, problem solving and modelling as well as vectors and 3D space, algebra, series, calculus, sampling, networks and linear programming.

You will be assessed through three or four written exam papers that focus on pure maths, statistics, mechanics or other topics pending on the programme of study.

## Why study Further Maths at Paston?

You will have the opportunity to attend trips to inspire you and enhance your passion for the subject. Our Maths Inspiration trip to Cambridge will allow you to see the wider applications of the subject. You will also have the chance to attend a mathematical symposium in Norwich where you will get the opportunity to be inspired by outstanding external speakers.

## Where your course can take you

If you achieve excellent grades in GCSE maths and are planning to apply for a science, technology, engineering and mathematics related degree, then this course is an ideal choice. This course goes well with any science, technology, engineering and maths related subjects and can support a wide variety of careers within those fields.

## Entry requirements

Grade 8 in GCSE maths. You also need to meet the overall A Level entry requirements, listed on page 6.







Scan the  
QR code to  
learn more

# A Level Geography

Through the study of a mix of physical and human geography, this course will help you to understand the world around us, environmental issues, global challenges, and human-environment interactions. The multidisciplinary approach used by geographers, linking physical and social sciences, will equip you with analytical and problem-solving skills that are highly valued by employers and universities

## What you will study

This course will provide you with the opportunity to study a range of contemporary human and physical geography topics which will engage you and help you develop the skills and knowledge to be global citizens and decision makers in a rapidly changing world.

Throughout the two years you will learn about places and coastal landscapes, water and carbon cycles, migration; power and borders, oceans and climate change, all while developing your geographical research skills. An exciting element of the course is the opportunity to complete coursework on a topic of your choice.

## Why study Geography at Paston?

Teaching and learning on this course is very interactive, with lots of opportunities to participate in discussions and debates, create presentations, and develop group work skills. You will be taught in well-resourced classrooms by dedicated teachers. You will also participate in four fieldwork days, which include days at the coast and in London.

## Entry requirements

Grade 4 or above in English language. You also need to meet the overall A Level entry requirements, listed on page 6.



## Where your course can take you

Geography opens many doors and is highly regarded by leading universities in science and social science. Geographers are highly prized in the workplace for their problem solving, communication, research, and analytical skills.

You can go onto work in a wide range of job roles, such as GIS technician, energy project management, business analyst, cartographer, environmental consultant, nature conservation officer, and many more.







Scan the  
QR code to  
learn more

# A Level

# Graphic

# Communication

Learn a range of practical graphic communication skills and create imaginative work to a series of briefs through this A Level course. You will have the opportunity to experiment with a whole range of materials, techniques and processes using digital and non-digital approaches, supporting you to develop your creativity and independent thought, learn to express yourself visually, and let your imagination flourish

## What you will study

Our Graphic Communication A Level will build on the skills, knowledge and understanding developed through art-based courses at GCSE. You will learn the elements of effective design by working to a series of set briefs and completing your own personal projects.

The course is broken up into two components. In the first you will develop work for a personal investigation based on your own interests in design. This will count for 60% of your total A Level marks. In the second, you will produce personal work in response to one of eight exciting AQA starting points which will count for the final 40% of your marks. You will develop your creativity, imagination and problem-solving skills, all transferable to a range of other subjects.

As a graphic communication student you will take part in a series of workshops to understand the equipment on offer, with access to our print studio, photography suite and Adobe software.

## Why study Graphic Communication at Paston

You will benefit from visiting speakers who will talk to you about their design process. Last year, our students learned from graphic designer and illustrator Andy Ward and graphic designer Lauren Meiszner.

You will exhibit your work in the annual Paston Art Show held in June each year and you will also have opportunities to go on trips abroad to Amsterdam and Berlin. We have great links with employers and with Norwich University of the Arts and have annual talks on creative progression, careers, and portfolio advice.

## Where your course can take you

The course will help you prepare for the next step in your creative career. Many students go directly onto degree courses at a wide range of universities to study graphics and/or other visual art disciplines.

Careers you could go into include: animation, digital arts, graphic communication, graphic design, graphic and communication design, media design, illustration, printmaking, packaging design, typographic design, fashion marketing, and branding.

## Entry requirements

Grade 4 or above in any art or design subject at GCSE. If you did not take an art or design GCSE, you must have a portfolio approved after interview as a condition of offer. You also need to meet the overall A Level entry requirements, listed on page 6.







Scan the  
QR code to  
learn more

## Level 3 Health and Social Care

If you have a passion for working with people, helping others to lead healthier lives and supporting them in the challenges they are dealing with, then our Health and Social Care course could be for you. The course is designed to equip you with the knowledge, skills, and experience needed to pursue a variety of rewarding careers in the health and social care sector

### What you will study

Whether you aspire to become a nurse, midwife, paramedic, social worker, mental health professional, special educational needs (SEN) specialist, occupational therapist, or psychologist, the course offers a solid foundation to help you achieve your goals.

You will study a wide range of topics, such as lifespan development, careers in health and social care, sociology, psychology, anatomy and physiology, understanding specific care needs, and care planning.

Alongside this, you will have opportunities to participate in health promotion campaigns, charity events to raise awareness of relevant issues, attend sector specific visits and hear first-hand from guest speakers from industry – such as current health and social care professionals, charities and other organisations.

Our curriculum is tailored to meet the demands of both higher education institutions and employers, ensuring that you are ready to excel in your chosen career path.

You will be assessed through a combination of exams and assignment-based tasks which may include report writing, presentations and group tasks.

### Why study Health and Social Care at Paston?

We work with a significant number of employers across Norfolk and Suffolk, including Norfolk and Norwich University Hospital, many residential care settings, and SEN schools. These employers offer a range placement and work experience opportunities for students to able to complete relevant industry placements.



### Where your course can take you

The course will provide you with the core knowledge and skills that will allow you to progress in a variety of rewarding destinations. This could include the next level of college-based study, university, an Apprenticeship or employment. You could continue your studies with us through City College Norwich Higher Education. We offer degrees and Higher Education options in a wide range of subjects including Health Studies, Mental Health Practice and Childhood and Youth Studies.

Former health and social care students have gone on to have successful careers in areas such as: healthcare assistant and nursing roles, paramedics, midwifery, social work, SEN teaching, occupational therapy, and counselling.

### Entry requirements

Five GCSEs at grade 4 or above, including GCSE English language or maths. You will also need to provide two references and attend a taster day.



Scan the  
QR code to  
learn more



# A Level History

This course brings three fascinating periods of British, European, and North American history to life, allowing you to explore a part of the past you're passionate about through the coursework module. If you're interested in history, enjoy learning and writing about the past, are open to lively debate, and want to understand how the world we know today was created, then this course is for you

## What you will study

As part of this course you will study three different topics. You will learn about the British transformation between 1918 and 1997, exploring the changes in British politics, society, economy and culture.

Next you will focus on the USA, the Boom, Bust, and Recovery, where you will examine the emergence of the United States as a superpower following the 1920s boom and the Great Depression.

You will also learn about the witch craze in Britain, Europe, and North America where you will analyse the prominent cases of witchcraft between the 16th and 18th centuries, including the Salem Witch Trials and the East Anglian witch craze.

Alongside these three compulsory topics, the coursework module allows you to explore a part of history that you are passionate about. Previous coursework topics have included World War One, the rise of Hitler, the French and Russian Revolutions and American Civil War.



## Why study History at Paston?

A wide range of interactive teaching methods will help you develop a good understanding of the compulsory topics. You will get the opportunity to learn from guest lecturers and visit sites that will bring the topics you are studying to life. Previous lecturers include Dr Malcolm Gaskill from the University of East Anglia (UEA), a specialist on the history of witchcraft.

We work with the Holocaust Education Trust every year and as part of your course you will be able to apply for the Lessons from Auschwitz course, which includes a trip to the Auschwitz-Birkenau Memorial and Museum in Poland.

## Where your course can take you

The study of history gives you an understanding of events and develops important transferable skills such as communication, analysis, and evidencing a case. Most students go on to study law or history at university. History A Level will help with many different career paths including journalism, archaeology, teaching, and politics.

## Entry requirements

Grade 5 or above in GCSE English language. You also need to meet the overall A Level entry requirements, listed on page 6.





Scan the  
QR code to  
learn more



# Inclusive Learning

Our Inclusive Learning courses are designed to help you plan for the future and to progress onto your chosen next step

## What you will study

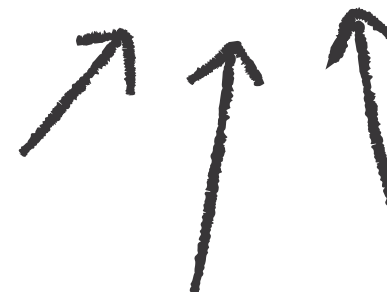
Whatever you're aiming for, we have courses available to meet your needs and support you to achieve your personal goals at Paston College. You may wish to explore our Inclusive Learning courses at City College Norwich and Easton College too.

If you join one of our courses, you will most likely be in a group of up to eight students and you will be supported by a teacher and an LSA in the class. Most of our courses are three days a week but if you are not able to manage this we can arrange for you to have a reduced timetable to help you attend college.

You will work closely with your course tutor who will guide you through your course, set you personal targets and record your progress. If you have an EHCP they will use this to understand your needs and to make sure that you get the support you require to work towards achieving your EHCP outcomes.

Depending on your needs and what you want to do in the future, you may spend your time with us all at one campus or you may progress onto one of our other campuses to continue your learning journey. Your course leader will work with you and your family/carers to make a plan that suits you.

**See the next page for  
our Inclusive  
Learning courses**



## Coming to college

We know that the idea of coming to college can be both exciting and worrying and that this is likely to feel like a big next step for you.

We understand that it might take you some time to settle into a new environment and that it can sometimes be challenging to adjust to the changes and new responsibilities that college can bring.

Coming to college is the first step in moving you towards becoming an adult, we will support you to make decisions about your future to gain independence.

## MINT

MINT is our employment service for young people (aged 16 to 25) with additional learning and employment needs. MINT is designed to support young people with barriers to work to gain sustainable and paid employment and operates across all three of our college sites.

Our specialist Employment Job Coaches provide one-to-one support to develop your confidence and employability skills with job applications, interview skills and work experience. They will also help you access training and support you to achieve your potential.

## Find out more

Come and meet our staff at one of our Open Events for a chat about our courses and have a tour of our onsite facilities. You can book a 20-minute slot with one of our team who will give you a personalised tour and talk you through your options. These events are always very well attended so we advise you to book early to avoid disappointment.

We can also arrange one-to-one visits, and we work closely with our local feeder schools, offering school visits for learners in Year 10 and 11.

If you have any questions or would like to arrange a visit, you can get in touch with our Inclusive Learning team by emailing [info-inclearning@ccn.ac.uk](mailto:info-inclearning@ccn.ac.uk)

# Inclusive Learning courses



## Find out more

You can also explore our range of Inclusive Learning courses at City College Norwich by visiting [www.ccn.ac.uk/inclusive-learning](http://www.ccn.ac.uk/inclusive-learning) and at Easton College by visiting [www.easton.ac.uk/inclusive-learning](http://www.easton.ac.uk/inclusive-learning). Visit page 102 to see the location of our campuses

## Multi Enterprise

Entry Level – One year

### What you will study

This course aims to provide you with a personalised learning programme that uses subjects such as enterprise and work skills to help prepare you for a future beyond college. As a student on the course, you will work as a team to create and run enterprise activities which will begin to broaden your experience of work and develop an understanding of the skills you will require for future employment.

### How will you be assessed?

You will work towards achieving an Entry Level 3 Gateway Qualification in Enterprise. Your completed units for the qualification will be marked and assessed. Your tutor will set you targets that will help you meet your EHCP outcomes, and your progress will be reviewed against these. You will also complete English and maths qualifications at a level which suits you.

### Where your course can take you

You could progress onto the Ticket course at Paston, complete a Work Matters supported internship or work with our MINT supported employment agency.

### Entry requirements

This course is designed for learners who are aged 16 to 25 and who have additional needs and/or disabilities. There are no formal entry requirements, however most learners who access this course will have an EHCP.

**We are also able to offer more bespoke pathways.**  
**Contact: [info-inclearning@ccn.ac.uk](mailto:info-inclearning@ccn.ac.uk) to find out more.**

## Ticket Paston

Entry Level – One year

### What you will study

This course aims to provide you with a range of learning opportunities to develop the skills, qualities and attributes required for future employment. You will be encouraged to embrace the prospect of work, identify your strengths and areas for development and to recognise what skills and qualities you have to offer to potential employers. Your lessons will build on key basic skills including English, maths and ICT and will provide you with a host of practical opportunities to engage with the local community and employers.

### How will you be assessed?

You will work towards achieving an Entry 3 or Level 1 BTEC work skills qualification. Your completed units for the qualification will be marked and assessed. Your tutor will set you targets that will help you meet your EHCP outcomes, and your progress will be reviewed against these. You will also complete English and maths qualifications at a level

### Where your course can take you

You could progress to complete a Work Matters supported internship with the college or work with our MINT supported employment agency.

### Entry requirements

This course is designed for learners who are aged 16 to 25 and who have additional needs and/or disabilities. There are no formal entry requirements, however most learners who access this course will have an EHCP.





Scan the  
QR code to  
learn more



# Level 3 Information Technology

In today's digital-first world, Information Technology is at the heart of innovation, communication, and problem-solving across every industry. This new Level 3 AAQ course has been designed to reflect the demands of IT. This course needs to be taken alongside two A Levels or one A Level and a second AAQ qualification

## What you will study

This course includes a practical focus supporting you to explore IT systems and cyber-security threats, how to manage attacks, how to create websites and manage data through the development of a relational database solution.

You will cover four units to give you a firm grounding in computing. You will explore information technology systems, cyber security and incident management, website development, and relational database development. The first two units will be assessed by exams, while the others will be completed through assignment work. Assignments consist of several tasks you perform to demonstrate both your knowledge and practical skills for that topic.

## Why study Information Technology at Paston?

Our computing room features both high specification computers with large screens that are used for programming and software development, as well as older computers which you can take apart and set-up to form small networks. We also have a number of Single Board Computers and microcontrollers.

As an IT student, you will enhance your industry knowledge through visiting speakers sharing their experience and visit the Centre for Computing History in Cambridge. You will also hear from local employers such as Aviva, Norfolk Police and Farrows who run workshops and talks on computing-based career opportunities.

## Where your course can take you

This qualification provides entry requirements for computing and IT degree courses or apprenticeships. It could also lead directly onto employment. Software developer, business analyst, systems analyst, network engineer, web developer and software tester are all roles you could explore.

## Entry requirements

Five GCSEs at grade 4 or above, including English language and maths.





Scan the  
QR code to  
learn more

# A Level Law

Have you ever wondered who makes laws? What's the difference between the role of parliament and the judiciary? What happens when a person is called for jury service? How do you protect your rights if you get injured through someone's negligence or are charged with a criminal offence? These questions and many more will be answered when you study A Level Law

## What you will study

You will focus on four main areas - the English legal system and the nature of law, criminal law, the law of tort and contract law. Within each area you will learn about different offences, civil wrongs and how to assess liability using sources of law such as cases and statutes to support and evidence your arguments. Alongside this, you will learn how to think logically and break down arguments into their component parts which are useful skills for future progression.

If you are interested in how our legal system works, how to secure convictions and your rights in legal matters, and if you enjoy assessing scenarios and have an inquisitive mind, then law is a great choice for you. Previous students have enjoyed great success, with our results often in the top 10% nationally.

## Why study Law at Paston?

Your educational experience will be enhanced by guest speakers from private and governmental organisations in both civil and criminal law as well as Gresham lectures. Additionally, you will have the opportunity to visit criminal and civil courts locally and in London through our links with the Crown Prosecution Service and His Majesty's Prison and Parole Service.

## Where your course can take you

Studying law will give you an understanding of legal processes, analysis capabilities, logical reasoning skills, and critical thinking, providing a broad skill-set for a variety of future roles.

If you decide to progress onto university, a degree in law can open numerous career opportunities for you in diverse fields like lawyers in public and community sector, judges, barristers, politicians, academics, solicitors in leading law firms, the police and prison service.

## Entry requirements

Grade 5 or above in English language. You also need to meet the overall A Level entry requirements, listed on page 6.







Scan the  
QR code to  
learn more

# A Level Maths

Through our A Level Maths programme you will acquire skills that are in high demand from employers and universities. You will develop skills such as team working, resilience, effective communication of complex ideas and the ability to use your own initiative

## What you will study

If you achieve good grades in maths and enjoy the subject at school, then A Level Maths could be for you. You will cover pure maths including algebra, functions, graphs, coordinate geometry, sequences and series, trigonometry, exponentials and logarithms, calculus, numerical methods and vectors. You will also cover statistics looking at statistical sampling, data presentation and interpretation, probability and statistical hypothesis testing, as well as mechanics focussing on models and quantities, kinematics in one and two dimensions, projectiles, forces, Newton's laws of motion and rigid bodies.

You will have the opportunity to attend trips to inspire you and to enhance your passion for the subject. The Maths Inspiration trip to Cambridge allows you to see the wider applications of the subject. We also attend a mathematical symposium in Norwich where you get the opportunity to be inspired by outstanding external speakers.

## Why study Maths at Paston?

A Level Maths will teach you to understand the world around you through applying mathematics to real life situations. Throughout this course, you will study topics on a deeper level and will have the opportunity to discover areas that will be new to you. You will also learn to think clearly and logically, and to persevere when you cannot immediately see the solution to a problem.

## Where your course can take you

The transferable skills of logical thinking, problem solving and analysis that you will develop during this course are always in high demand. This will allow you to progress onto further mathematical study, any university course or enter employment in a variety of fields including banking, insurance, architecture, economics, medicine and law.

## Entry requirements

Grade 6 in GCSE maths. You also need to meet the overall A Level entry requirements, listed on page 6.







Scan the  
QR code to  
learn more



# A Level Media Studies

In a world shaped by digital content, social media, and 24/7 news cycles, A Level Media Studies offers you a powerful lens through which to understand and critique the media that surrounds us

## What you will study

You will study the theoretical framework of media - genre, representation, audience, institutions, narrative and language - through critical analysis of media texts and practical production work. Through the analysis of both contemporary, global and historical media, you will appreciate how important the media is in our lives, both as consumers and producers.

You will explore nine media forms: television, film, radio, newspaper, magazine, advertising and marketing, online, social and participatory media, video games and music videos. You will also create a media product, developing practical production skills and using contemporary media technologies.

You are likely to do well in this subject if you are interested in the media, not just for the content, but also for the organisation/institution and meanings behind them. You will also need to be creative and well-organised to complete your practical work. Media Studies can be taken with any other subject, but students often choose to combine it with English, Film, Art, Photography, Textiles, Sociology, History, Business Studies, Drama and Psychology.

## Why study Media Studies at Paston

You will be supported by experienced staff and have use of high quality DSLR cameras, Adobe Creative Cloud software including Photoshop, Premiere Pro, InDesign, After Effects and Audition, and have access to a TV studio.

You will develop skills in creative media production, collaboration, time management, critical analysis and interpretation, essay writing and debating that can be useful in a wide range of careers.



## Where your course can take you

The course will support your progression to university or study for a professional qualification in a wide range of degrees including media production, media studies, film studies, digital film production, television production, journalism, advertising or marketing, events and exhibition management.

## Entry requirements

Grade 4 or above in GCSE English language. You also need to meet the overall A Level entry requirements, listed on page 6.







Scan the  
QR code to  
learn more

# A Level Philosophy and Religion

This course will help you to understand the world around you by increasing your self-awareness and enhancing your critical faculties. You will explore the impact of Christianity on culture and society, as well as its relationship to the big questions of philosophy like the existence of God and the nature of consciousness

## What you will study

Our Philosophy and Religion A Level will encourage you to engage critically with contemporary moral and ethical issues as well as exploring the nature of religion and its relationship to the modern world. You will develop a broad knowledge of religion and enquire into the purposes and commitments of human life – especially those expressed in philosophy, ethics and religion.

The course covers Christianity as its main religious component. You will examine and debate the fundamental teachings of Christianity such as the existence of the soul and the afterlife, or belief in miracles. We also look at contemporary Christian issues such as gender identity and Christianity, and Christianity in a multicultural society.

## Why study Philosophy and Religion at Paston?

The course is stimulating and varied. You will have six hours of homework a week, which could include watching videos, conducting surveys, preparing presentations and independent research as well as reading and writing activities. The topics and materials covered are thought-provoking, leading to fascinating in-depth classroom discussions.

Expanding your knowledge of philosophy, ethics and Christianity, as the major world faith studied, will have many connections to other A Level subjects at Paston, such as History, Psychology and Law.

## Where your course can take you

The transferable skills you develop from studying philosophy and religion will assist you in continuing your education at university or progressing within a career.

You could progress into areas such as teaching, journalism, research, social work, social policy development, theological training, and much more.

## Entry requirements

Grade 4 or above in GCSE English language. You also need to meet the overall A Level entry requirements, listed on page 6.







Scan the  
QR code to  
learn more



# A Level

# Photography

Are you passionate about visual storytelling, creative expression, and capturing the world through a lens? A Level Photography offers you the opportunity to explore photography as both an art form and a powerful communication tool

## What you will study

Photography has evolved to become one of the most important forms of visual communication. It has a wide variety of applications in areas such as documentary, fashion, editorial, fine art, sports, and natural history. At Paston College you will use both traditional film photography and digital processes, with darkroom facilities for 35mm, 120mm and 5x4" film enlargements as well as a suite of computers for high quality, large format printing.

You will learn and refine your understanding of core principles in the various functions of the camera, the use of Adobe editing software, and darkroom techniques, through a series of short assignments. You will then embark on a personal exploration with freedom to choose your own subject, theme, and ideas to express. Throughout the course you will be supported to develop your coursework towards a final piece. You will also develop skills such as team working, resilience, effective communication of complex ideas and the ability to use your own initiative.

## Why study Photography at Paston?

You will learn a wide variety of camera, software, and darkroom skills based around 35mm, 120mm, 5x4" film and 35mm digital formats. You will use cameras with fully manual settings to understand exposure and utilise unique qualities such as depth of field and motion capture.

You will learn how to process film, enlarge and tone images with experimental printing techniques such as cyanotype and albumen printing. Flash photography in studio and location settings will also be covered as well as Adobe Photoshop and Camera RAW editing styles.



## Where your course can take you

Previous students have progressed to various forms of photography or other arts subjects at university. Many have gone onto study subjects such as architecture, fashion, marketing, and film production.

## Entry requirements

Grade 4 or above in GCSE art, graphics or photography. If you did not take an arts GCSE, you must have a portfolio approved after interview as a condition of your offer. You also need to meet the overall A Level entry requirements, listed on page 6.







Scan the  
QR code to  
learn more

# A Level Physics

Physics is a highly fascinating subject that aims to understand how the entire physical world around us works. From the extremely small scale of quark interactions to the extremely large scale of the gravitational interactions between galaxies, physics encompasses everything in our universe. If you have a naturally inquisitive mind and enjoy solving problems, this course is for you

## What you will study

Over the two years of the course, topics you will cover include Newtonian mechanics; thermodynamics; electricity; materials; gravitational and electrostatic fields; astrophysics; waves; photons and lasers; particle theory; nuclear radiation; magnetic fields and electromagnetic induction.

You will also have the opportunity to complete and design a range of experiments to further enhance your understanding of the subject. This will not only provide you with the groundwork to study physics at degree level, but will also enable you to approach a broad range of careers and other subjects that are reliant on problem-solving and strong scientific skills.

## Why study Physics at Paston?

A wide range of interactive teaching methods will help you develop a good understanding of the compulsory topics. You will get the opportunity to learn from guest lecturers and visit sites that will bring the topics you are studying to life.

## Entry requirements

Two GCSEs at grade 6 or above, including in physics/additional science and maths, and three GCSEs at grade 4 or above. Studying A Level maths alongside this course is not required but is recommended. If you wish to study physics at degree level, most courses will require an A Level in maths as well as physics. You also need to meet the overall A Level entry requirements, listed on page 6.

## Where your course can take you

A Level Physics will support you to progress to a large variety of careers. It is a highly regarded qualification, sought-after by many employers and courses, especially those that rely heavily on problem-solving and numerical skills.

Physics also develops key skills such as logical thinking and data analysis, which are highly desired in a range of careers. Science, engineering and computing are common careers that you can progress into. However, you could also pursue careers in finance, medicine and architecture.







Scan the  
QR code to  
learn more



# A Level Politics

Politics impacts every part of your life, from how much a litre of petrol costs to what you study at school. Every day, politics changes and influences how our society is run and is viewed by the people living in the country and those abroad. These perceptions are integral in how the country is governed and how we situate ourselves within the global sphere. You will consider the impact of contemporary events such as the Covid-19 pandemic and Brexit as well as historical contexts that shape how we experience politics today

## What you will study

During your first year you will study two units of work, focusing on UK politics and core political theories. You will explore democracy in the UK and how people have gained the vote over time, including the role of the Suffragettes. You will look at pressure groups such as Just Stop Oil and whether they are effective in making a difference.

You will also study the key elections of 1979, 1997 and 2019 and why people voted the way they did, including the role of the media. In the UK government unit, you will look at how the government runs and how laws are made, as well as the role of backbenches and the influence they can have.

In your second year you will consider theories of how countries can be isolationist and protect their own interests vs having a global, collective approach to politics. You will also explore global politics considering international relations and how they are impacted by factors such as organisations like the UN and NATO. You will study how environmental and human rights issues are viewed internationally and the impact a collective approach can have.

## Why study Politics at Paston?

Studying Politics enables you to think critically about the world. Developing this criticality is a transferable skill which could support you to go into employment at a political think tank, teaching or for a non-government organisation such as Amnesty International.



## Where your course can take you

Politics is an essay-based subject which places you in a strong position to progress to university and study a degree in subjects such as politics, history and law. Due to the course focus on global politics, you will also be well-equipped to explore a business route.

## Entry requirements

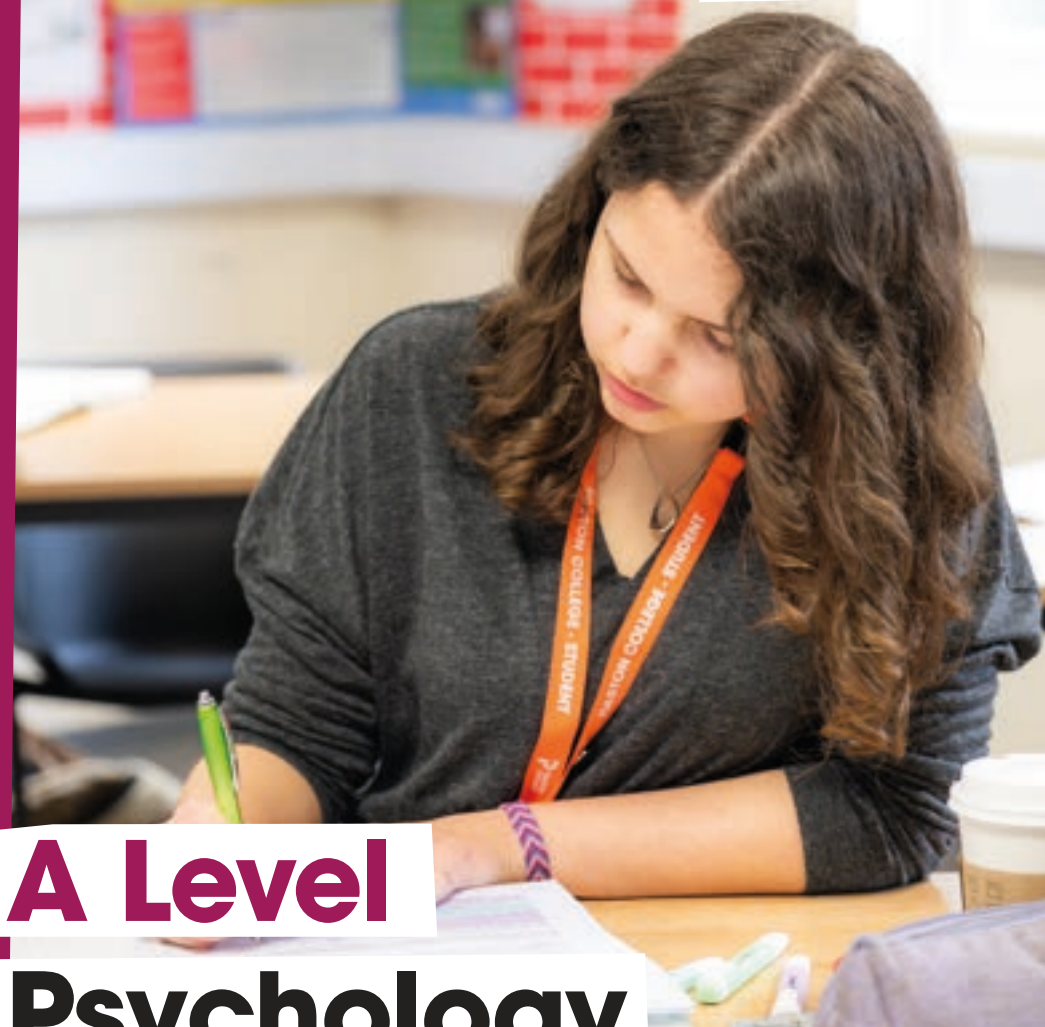
It is recommended that you achieve a grade 5 in a written subject such as GCSE history or geography. You also need to meet the overall A Level entry requirements, listed on page 6.







Scan the  
QR code to  
learn more



# A Level Psychology

Psychology is the scientific study of mind and behaviour and offers a fascinating insight into the self and others. It is a broad, dynamic subject that will inspire you to think about things in a different way. As well as providing a foundational understanding of four major approaches, year two offers two applied areas - clinical and criminological - that show how knowledge and research can help society

## What you will study

This course will give you a fascinating insight into the study of psychology. You will learn to design research, evaluate studies, interpret statistics and debate a range of issues such as ethics, culture and gender bias. You will explore how psychology can open many career paths as this subject is not only useful for those interested in becoming psychologists health professionals, but also for those interested in a broad range of jobs involving the management of people.

This course is perfect for those who have an inquisitive and open mind. If you're interested in understanding the influences that shape human behaviour and feel comfortable applying approaches from both the sciences and humanities, then A Level Psychology could be a great choice for you. You will complete three exam papers during the course, learning about four psychology approaches, two applications and research methods.

## Why study Psychology at Paston?

The wide range of transferable skills and knowledge you will acquire from the course make this an excellent foundation for your future. The course combines aspects of science, humanities and the arts.

## Where your course

### can take you

Apprenticeships or further study at university level are both common routes pursued by A Level Psychology students. Many students go onto undergraduate study at university, and a degree in psychology can open many doors across a variety of careers, especially where people are the focus, such as journalism, health, advertising and marketing, human resources and education.

You could also study a BSc (Hons) Social Sciences degree through City College Norwich Higher Education.

## Entry requirements

Grade 5 or above, in GCSE English language and maths. You also need to meet the overall A Level entry requirements, listed on page 6.





Scan the  
QR code to  
learn more



## Level 3 Sport

Sport and exercise scientists help athletes and sports professionals improve their performance and general health. They use scientific knowledge on how the human body works, moves and how people think about physical activity to help people get better at what they do. This course needs to be taken alongside two A Levels

### What you will study

This qualification will give you a good understanding and knowledge of the sports and active leisure sector as well as developing the essential skills required for employment or progression to further qualifications and training.

You will cover four modules including anatomy, sports psychology, coaching and physical activity. You will benefit from guest speakers and visiting employers who will share their knowledge of the industry.

You will be assessed through both exams and coursework and at the end of your course will achieve UCAS points to support you to progress to higher-level study. This could be close to home with our Higher Education provision based at Easton College where you can study a BSc (Hons) Sport, Health and Exercise Science degree, validated by the University of East Anglia.

### Why study Sports and Exercise Science at Paston College?

Paston College has excellent facilities to deliver high-quality theory lessons, fitness and sports sessions and prides itself on its links with the wider community, utilising facilities at schools, leisure clubs, gyms and at our sister site at Easton College.

### Where your course can take you

You can progress to degree-level study at university or college, such as a degree in sport, health and exercise science, or a degree in physiotherapy or nutrition. This course also provide routes to lots of different careers in sports science, sports development, sports psychology, sports management, sports therapy, nutrition, teaching, leisure and fitness. Previous students have gone onto roles such as a gym instructor, lifeguard, leisure centre/club assistant, personal trainer, sports physiotherapist, duty manager, trainer, teacher, healthcare professional or sports coach.

### Entry requirements

Two GCSEs at grade 6 or above and three GCSEs at grade 4 or above. You will also need a grade 4 or above in GCSE English language and maths and a GCSE (or equivalent) in physical education (PE), sport or biological science is desirable.







Scan the  
QR code to  
learn more



# A Level Sociology

**Sociology is the study of human behaviour, looking at how social structures such as education, the family, and the criminal justice system affect our daily lives. The subject covers a wide range of issues including class, gender, ethnicity and age. Sociological study has close links to psychology, politics and history. It encourages you to ask questions about your own experiences and to reflect on how and why society is structured the way that it is**

## What you will study

Sociology explores the reasons individuals act the way they do, while suggesting solutions to the problems we face today. You will consider major societal events such as the 9/11 attacks, Brexit, the 2008 global financial crisis, and colonisation, exploring the factors that led to these events and their consequences for individuals and for society.

You will cover four main topics: culture and identity, education, beliefs in society, and crime and deviance. Through these topics you will explore sociological perspectives such as Marxism and feminism.

You will investigate questions such as: what impact does class have on educational outcomes? Why do men commit more crime than women? What leads to someone joining a cult? You will be encouraged to use the answers to identify solutions that might help other members of society.

## Why study Sociology at Paston?

This wide-ranging course will help you to develop an array of skills including critical thinking, independence, and problem-solving. You will be equipped to be adaptable to a variety of employment and higher education subjects.

As part of the course you will have the opportunity to visit The Royal Courts of Justice in London, where you will enact a mock criminal trial and observe an actual trial in progress. Other trips, such as to the cities of Edinburgh, Paris and Rome, provide opportunities for cross-cultural comparisons of education, culture, and identity.

## Where your course can take you

Sociological study will equip you with the skills to understand people which is useful in all careers, from informing governments about social issues, working in health and social care, and business.

You could study a BSc (Hons) Social Sciences degree through City College Norwich Higher Education.

Our students have gone on to careers including teaching, speech and language therapy, social work, mental health, counselling, and marketing.

## Entry requirements

Grade 4 or above in GCSE English language. You also need to meet the overall A Level entry requirements, listed on page 6.







Scan the  
QR code to  
learn more



# A Level Textiles

If you want to express your creativity in ways that can be applied to areas such as textile design, surface design, interior design, fashion and constructed textiles, then our Textiles A Level course could be for you

## What you will study

This course offers the opportunity to develop skills over a broad range of textile and fashion techniques and applications, such as screen printing, weaving, knitting, mixed media, digital applications, surface design, stitch, drawing, dye techniques and collage.

Your practical work will be produced by working through a design process, researching and developing ideas using a variety of digital and non-digital skills which you will document in your sketchbook, supported by critical evaluation and an awareness of contemporary and historical influences. Our students say they love the independent working time they get after they have learnt new skills in our rooms full of industry standard equipment.

If you're interested in applying to study a degree-level art and design course, we offer one-to-one portfolio sessions to help you select the best work to show at interviews. Norwich University of the Arts also come in to discuss portfolios and interviews to ensure that you are well prepared for your next step.

## Why study Textiles at Paston?

You will take part in a series of workshops to understand the equipment we have on offer including sewing machines, computers for digital design, a knitting machine, looms, a heat press, printing press, screen printing facilities and a natural dye station.

You will also benefit from guest speakers talking about the design processes they use. Previous students have heard from textile artists Debbie Lyddon and Louise Richardson, as well as taking part in a workshop with milliner Bridget Bailey.



## Where your course

### can take you

The course helps you to prepare for the next step in your creative career. Many students go directly onto degree courses at university to study textiles and other visual arts disciplines such as decorative arts, knitwear design, fashion, fashion management and textiles.

## Entry requirements

Grade 4 or above in any art or design subject at GCSE. If you did not take an art or design GCSE, you must have a portfolio approved after interview as a condition of offer. You also need to meet the overall A Level entry requirements, listed on page 6.





# Extended Project Qualification



**The Extended Project Qualification (EPQ) is a stand-alone qualification – the equivalent of half an A Level - which gives you the opportunity to work intensively on something you're especially interested in. All students at Paston have the opportunity to complete the EPQ.**

## What you will study

EPQ gives you a real insight into what undergraduate study is like; universities love it and often make lower offers to applicants who have done it. You're entirely in charge: choosing your topic, deciding on a format, and devising a project plan.

Through EPQ, you will develop a dynamic and transferable set of academic skills: intellectual independence, critical thinking, problem-solving, time management and creativity. You will plan your project, set and adjust targets, undertake in-depth research and evaluate a wide range of resources, before synthesising everything in your final product.

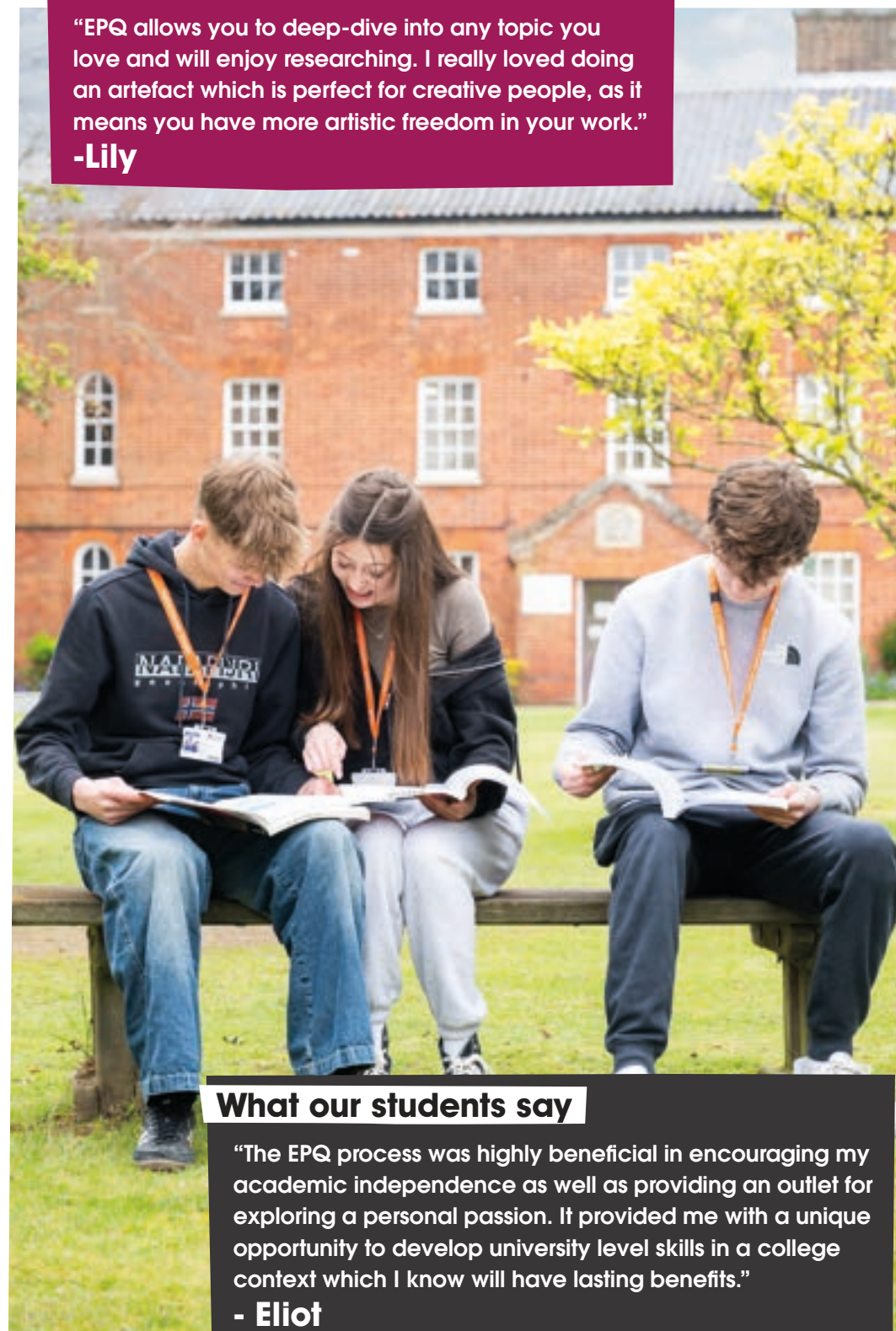
You can either write a 5,000-word dissertation or produce an artefact - for example, directing a short film, curating a photographic exhibition, making a machine, or writing a piece of software.

Previous students have researched and written about a variety of subjects including the cultural significance of trees; gender roles in pantomime; the relationship between fashion and political activism and the influence of Pep Guardiola on the tactics of modern football. Others have written and filmed a monologue, taught a lesson in conversational Korean, and built and monitored a reef tank.

Most students complete the EPQ in their first year, working on it alongside their main programme.

## What our students say

"EPQ allows you to deep-dive into any topic you love and will enjoy researching. I really loved doing an artefact which is perfect for creative people, as it means you have more artistic freedom in your work."  
-Lily



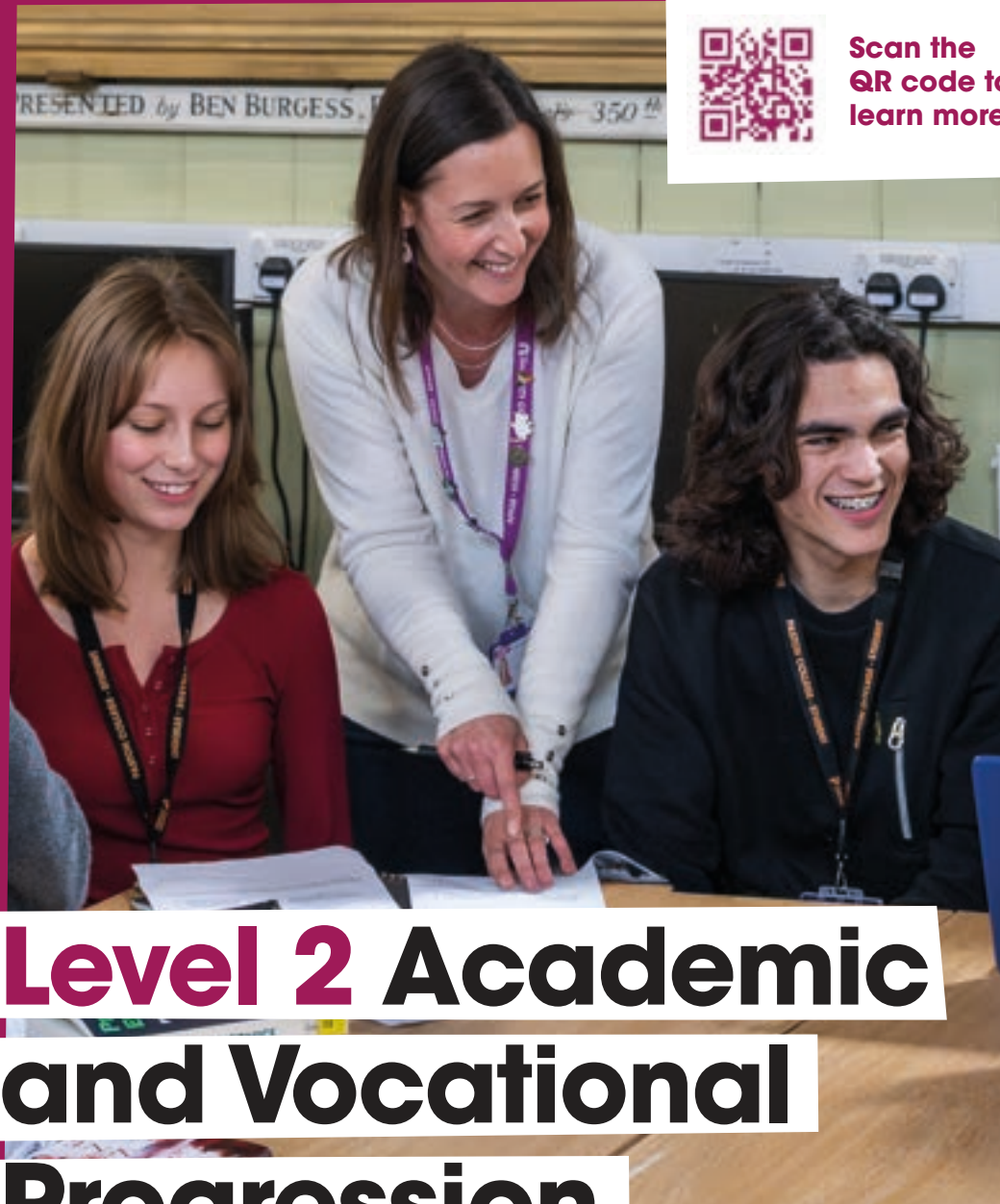
## What our students say

"The EPQ process was highly beneficial in encouraging my academic independence as well as providing an outlet for exploring a personal passion. It provided me with a unique opportunity to develop university level skills in a college context which I know will have lasting benefits."  
- Eliot





Scan the  
QR code to  
learn more



# Level 2 Academic and Vocational Progression

Our Academic and Vocational Progression courses are designed for students who have finished Year 11 without the GCSE results they hoped for or need more GCSEs to progress onto the next level of study. This might be for either an academic pathway such as A Levels or a vocational pathway, such as T Levels or other Level 3 courses

## What you will study

Our Academic and Vocational Progression course is a one-year programme which allows you to choose from both GCSE and vocational options, depending on your intended destination. You will need to choose four options from the list, with some options taking up two of these blocks.

- GCSE English
- GCSE Maths
- GCSE Psychology
- GCSE Citizenship
- Higher Project Qualification (HPQ)
- Creative Media Skills Diploma Level 2 (counts as two options)
- Health and Social Care Level 2 (counts as two options)

On top of GCSE learning, your timetable will contain a lesson each week of personal development to help you develop strategies to overcome barriers and support you to progress. You will also complete a weekly session of private study to help you develop your independent study skills in preparation for Level 3 study. As part of your course you will be supported by an experienced and dedicated team to help you reach the next steps in your educational journey.

## Where your course can take you

Successful completion of this course should allow you to progress to the next level at college, for example A Levels, T Levels or other Level 3 career-focussed courses at Paston College, City College Norwich or Easton College. Following this, you could progress to university, move into an Apprenticeship or employment.

Some of the careers you might consider include becoming a financial analyst, project manager, brand manager, paramedic or counsellor, to name a few. You might also consider going into marketing, journalism or human resources.

## Entry requirements

If you are taking GCSEs you will need a minimum of grade 3 or above in English language.





# A+ Programme



**If you are interested in studying at Oxford or Cambridge or hoping to take highly competitive subjects such as medicine, dentistry or veterinary science at university, then our A+ Programme will be perfect for you.**

## What you will study

This programme provides support for all the additional entry requirements you may have to meet and is named after the early application deadline faced by all Oxbridge applicants, medics, dentists and vets.

To help with your application, you will receive specialist guidance to develop and practise academic skills beyond those required for A Level. You will be given support to prepare for your interview and advice about the sort of super-curricular activities which will make your application stand out.

Alongside this, there will also be opportunities to visit the universities, attend summer schools, and shadow current Oxbridge students to help you in your decision-making process.

## Entry requirements

Characteristically, students who join the programme will have achieved mostly grades 7, 8 and 9 at GCSE. However, if you are producing consistently excellent work on your A Level programme, then the A+ Programme will also be open to you.



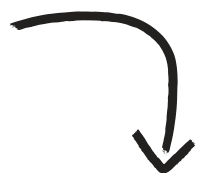
# How to apply



Follow these steps and submit your application on our website: [www.paston.ac.uk](http://www.paston.ac.uk)

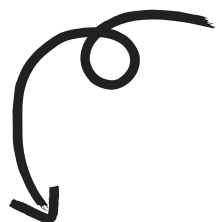
## Step 1 Apply on our Learner Hub

Complete your application online. This will create a college Learner Hub account where you can monitor the progress of your application. Applications open on September 25th 2025, we recommend applying as early as you can.



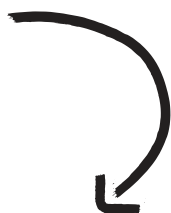
## Step 2 Book your interview

Interview. You will be invited to attend an interview and/or taster day. Book your interview and/or taster day via your Learner Hub account.



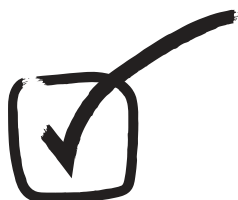
## Step 3 Accept your offer

We will get in touch shortly after you have attended your interview or taster day with an official offer. You will need to sign in to your college Learner Hub account to accept your offer.



## Step 4 Enrol

Enrolment occurs in the last two weeks of August. We will send you an appointment date and time at the start of August. During your appointment, you will meet your tutor, provide details of the qualifications you have achieved, and receive full information about your course.



## Apply early

Our courses fill up quickly! Get your application in early, applications open on September 25th 2025.

## Help you choose

If you are applying through "Help You Choose" via your school, you will be emailed a link to create your college Learner Hub account. Remember to keep your login details safe as you will need this to monitor your application and book your interview and/or taster day.

## Applying for more than one course?

You will need to book an interview for your first-choice course initially. For A Levels, you will have one interview where all your subject choices will be discussed. For a second-choice interview for a different programme of study, please contact our Admissions team by emailing [admissions@paston.ac.uk](mailto:admissions@paston.ac.uk) or call 01603 773008. If you have first choice offers from multiple campuses (Paston, City College Norwich or Easton) you will need to choose your main preference

## International students

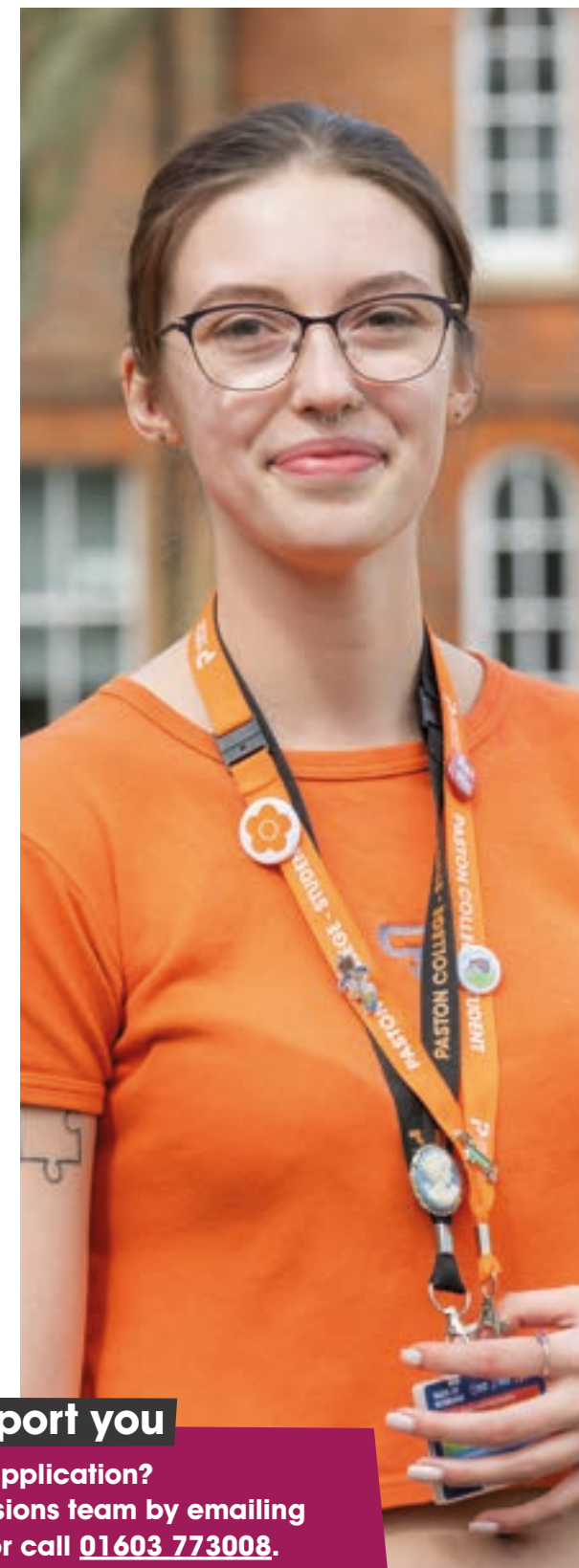
If you have come to live in the UK from overseas and would like to study at our college, please contact our International Adviser by emailing [international@ccn.ac.uk](mailto:international@ccn.ac.uk) or call +44 (0)1603 773798 for help and guidance on how to apply.

## Interested in Apprenticeships?

Find out more about Apprenticeships: [www.ccn.ac.uk/apprenticeships](http://www.ccn.ac.uk/apprenticeships)

## We are here to support you

Got a question about your application? Get in touch with our Admissions team by emailing [admissions@paston.ac.uk](mailto:admissions@paston.ac.uk) or call 01603 773008.





# What will my day look like?

Once you have enrolled in the summer, you will be given your college timetable. We have included some examples to give you an idea of what your study programme will include and how your time will be allocated throughout the week. Please note, these are just an example and all timetables are based on your individual course choices and will be finalised once enrolment is completed.

## A typical timetable for A Levels

	9am	10am	11am	12pm	1pm	2pm	3pm	4pm	5pm
Monday	Study session	Tutorial session			Course Business		Course Business		
Tuesday	Course Politics	Course Politics			Independent learning and enrichment				
Wednesday		Course Sociology	Course Sociology		Independent learning and enrichment				
Thursday	Course Business	Course Business			Course Politics		Course Politics		
Friday	Independent learning and enrichment				Course Sociology		Course Sociology		

Break times

## A typical timetable for a vocational or technical study programme

	9am	10am	11am	12pm	1pm	2pm	3pm	4pm	5pm
Monday	Independent learning and enrichment								
Tuesday	Course Portfolio		Course Practical		Course Tutorial		Independent learning and enrichment		
Wednesday	Maths GCSE		Maths GCSE			Course Practical		Course Practical session	
Thursday	Work experience								
Friday	English GCSE		English GCSE			Course Theory session		Course Tutorial	

Break times

## A typical timetable for a T Level programme

	9am	10am	11am	12pm	1pm	2pm	3pm	4pm	
Monday		Tutorial session			Course Module A		Course Module A		
Tuesday	Course Module B		Course Module B		Tutorial session	Personal development and study session			
Wednesday	Work placement								
Thursday	Tutorial session	Course Module C		Course Module C		Course Module C		Personal development and study session	
Friday	Work placement								

Break times

# College facilities



Scan the QR code to learn more

**Paston College is a unique and interesting place to study with a mixture of historic and modern buildings. The college campus is spread across two sites that are a short walk away from each other - known as The Griffons and The Lawns. The Griffons site is the original Paston site which dates back to 1606 and is home to the historic Nelson Room where Lord Nelson studied before he joined the Royal Navy in 1771.**

## Places to eat

Our on-site Starbucks cafe provides the perfect place to grab a coffee with friends and socialise during break and lunch times. In addition to your favourite syrup lattes and iced coffees, you can also enjoy a range of hot and cold food and sweet treats which you can eat in or take away. And if you fancy a stroll, Paston College is based in the heart of the historic market town of North Walsham where you will find plenty more places to grab a bite to eat.



## Griffon Theatre

The Griffon Theatre is home to our Drama and Theatre Studies course and The Paston Far East Theatre Company. The 150-seat theatre boasts the latest digital sound, lighting and production technology, a cyclorama and movable seating to enable 'in the round' style theatre, the perfect venue for students, family and friends to enjoy a range of college theatre productions.



## Griffon Studio

The Griffon Studio is home to our art, photography and textiles courses and provides lighter and larger classrooms with screen printing facilities, a beautiful exhibition space, IT areas and a photography dark room.



## Student library

If you need a space for some quiet study and to access resources, our library has everything you need. There are lots of study spaces for individual and group work, and there is always a member of library staff available to help you use the library and find what you need.



## Outside spaces

Both The Griffons and The Lawns site offer large green spaces where you can enjoy lunch on the grass or play table tennis in the sunshine with friends!





# English language and maths skills



**English language and maths are the most fundamental skills a young person can have not just for work, but for life. In order to help you achieve success now, and in the future, we will ensure you continue to make progress with these skills throughout your programme of study.**

**Use this guide to find out how English and maths will be built into your studies:**

Whatever grades you achieved in your GCSEs, your programme of study at Paston College will include opportunities for you to develop and enhance your English language and maths skills.

You will be supported to reach your full potential in classes that build on your prior attainment.

**4**

**I've achieved grade 4 and above in GCSE English language and/or maths**

You will continue to develop your skills as part of your chosen course(s).

**1-3**

**I've achieved grade 1-3 in GCSE English language and/or maths**

You will take either GCSE or Functional Skills in English language and/or maths

**0**

**I don't have GCSE English language and/or maths**

You will be enrolled onto a GCSE or Functional Skills programme

## GCSE English language

English language and literacy are highly valued skills in both education and employment. It is about being able to effectively communicate, confidently articulate and express your thoughts, as well as actively listening and understanding other viewpoints. Therefore, English skills are an essential part of your programme of study and your future progression plans.

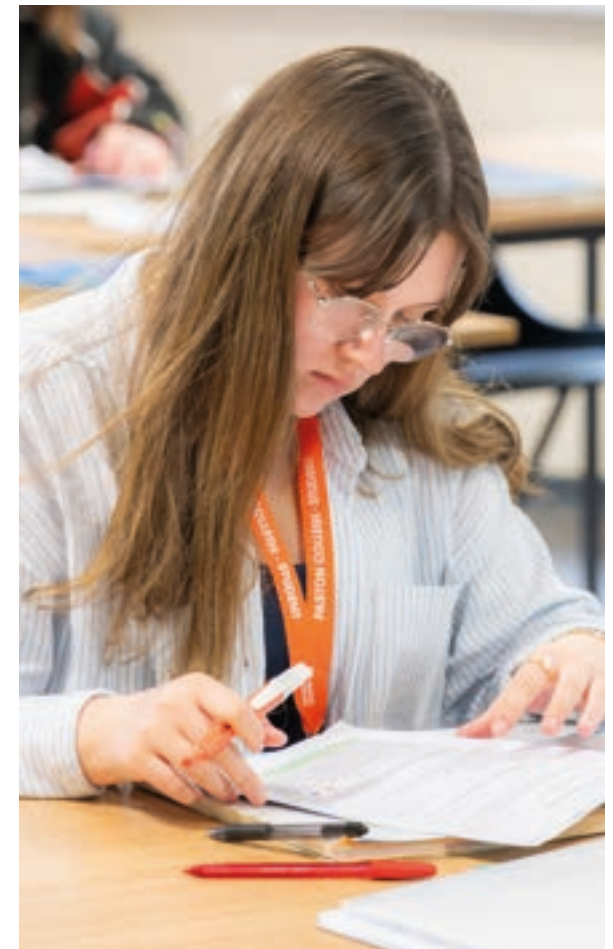
## GCSE maths

Maths and numeracy skills are a central part of your programme of study. It is not just about knowing how to carry out calculations and getting the right answer; it is about improving your skills in recognising problems, finding possible solutions and communicating your reasoning. Therefore, maths skills are an essential part of your future progression in education and employment.

## English language and maths Functional Skills

English language and maths are essential qualifications that give you a range of skills for life. If you have gaps in your subject knowledge that need further development before progressing to GCSEs, then Functional Skills courses are a great starting point. They focus on developing the core skills needed, as well as highlighting the relevance of English language and maths in real life situations.

These qualifications are available at different levels to support your skills development and understanding. They provide a secure foundation to aid progression within both education and employment.



Macie

**The resources my teacher gave me were really useful. I feel confident knowing that I have now achieved my grade 4 and know that it will have a positive impact on my future career**

# Success stories



**Attia**

## Studied

A Levels: Drama, English Literature and Maths

## Next steps

Attia is hoping to progress to university to study drama.

"Studying at Paston has allowed me to explore my interests, and has given me a clear idea of the subjects that I enjoy. I have particularly enjoyed the drama opportunities at Paston, and have gained so much independence throughout my time here."

## Studied

A Levels: Drama, English Literature and Psychology

## Next steps

Eliot is hoping to study English literature at university.

"During my time at Paston, the staff have been amazing, and I have had the chance to engage in exciting opportunities such as the Far East Theatre Company. Studying at Paston has allowed me to develop my social skills and grow academically."



**Eliot**



**Isabelle**

## Studied

T Level in Education and Childcare (Early Years Educator)

## Next steps

Hoping to progress to university to study midwifery.

"Everyone is so lovely at Paston College, and any problem that I have had throughout my studies has been solved. My course has given me so much confidence for the future, and I have made so many friends throughout my time at Paston."



**Tyrese**

## Studied

A Levels: Drama, English Literature and Film Studies

## Next steps

Planning to progress to an Apprenticeship in the film and TV industry.

"Studying at Paston has really helped me to build connections in the performance industry, and has allowed me to grow and understand the parts of myself needed to succeed in the future. I especially enjoyed the practical work involved in Drama and Film, and the group work in my English Literature lessons."

## Studied

A Levels: Criminology, Law and Drama

## Next steps

Imogen is planning to progress to university to study criminology, with the goal to become part of the police system.

"Throughout my time at Paston, the tutors have been really engaging and treated me like an adult. I also gained a great relationship with all my tutors, who I could always rely upon. Paston gave me the opportunity to experience a variety of fields of study, so that I could ensure university was the right path for me, and supported me with my application to university."



**Imogen**



**Ella**

## Studied

A Levels: Psychology, Art, and Environmental Science

## Next steps

Planning to progress to university to study tropical marine science or biology.

"I chose to study at Paston College because Environmental Science is something that I've always wanted to explore. Every member of staff is so passionate about what they're teaching, and because of this I have learned so much."



# Supporting your studies

**Our Student Services team are here to provide you with the support and advice you need to focus on your studies and make your time with us as enjoyable as possible. We care about your future, that's why we have a friendly and professional advice team offering information and support on careers, finance, travel and more.**

## The Advice Shop

Through The Advice Shop, we offer expert impartial advice and guidance for anyone considering their career, education and training options. This free service is available to both our existing students and young people and adults across Norfolk exploring options to study with us. For more information, email [pastoninfo@ccn.ac.uk](mailto:pastoninfo@ccn.ac.uk) or call **01692 668080**.

## Careers support

**Our qualified careers advisers offer a range of careers services for students, including:**

One-to-one guidance appointments

Help with CV writing

Job and Apprenticeship applications

Interview preparation

Support in applying for both higher education and university

We also run careers fairs and inspirational talks and discussions from local and national employers, to help you prepare for the world of work.

## Finance support

Student funding can seem a complicated and daunting subject and you may not be sure what you are entitled to. Our Student Finance Advisers can provide you with clear, accurate and confidential advice about bursaries and free college meals. You can get in touch with them by emailing [financialadvice@ccn.ac.uk](mailto:financialadvice@ccn.ac.uk).

## Travel advice

Transport to Paston is both convenient and affordable with North Walsham being served by both bus routes and train services. The train station is just a short five-minute walk from college and connects services from Norwich to Cromer, Sheringham and Runton on the coast. And as a student with us, you can enjoy discounted travel from Norfolk County Council and Greater Anglia Rail services, saving you money travelling to and from the college.

See page 102 for more information.

## Curriculum Services

Paston College is passionate about supporting students who need additional learning support. Our aim is to ensure you have the information and support to enable participation and help you achieve the best possible education outcomes.

Our Curriculum Services team will assess your needs so we can provide the most effective and appropriate support for you.

You can contact our Special Educational Needs Team and share your Education Health and Care Plan (EHCP) by emailing [sen@ccn.ac.uk](mailto:sen@ccn.ac.uk). You can also inform us of any support needs you have during exams once you have enrolled.

## Study Skills Centre

If you require additional support with your studies, you will find help in the Study Skills Centre. This is a quiet and supportive working environment where you can study alone, work within small groups or work one-to-one with a member of the support team. The centre is open during college hours, and it is well equipped with computers and desks.



## Tutor support

All students have a personal tutor who will help you settle in and support you throughout your time at college. Tutors are a vital part of your college experience, and you will see them both in group sessions and on a one-to-one basis.

Their role is to support your progress towards your own personal targets. They will provide you with personal development opportunities and help you on your journey to university level study, Apprenticeships or employment.

## Wellbeing Team

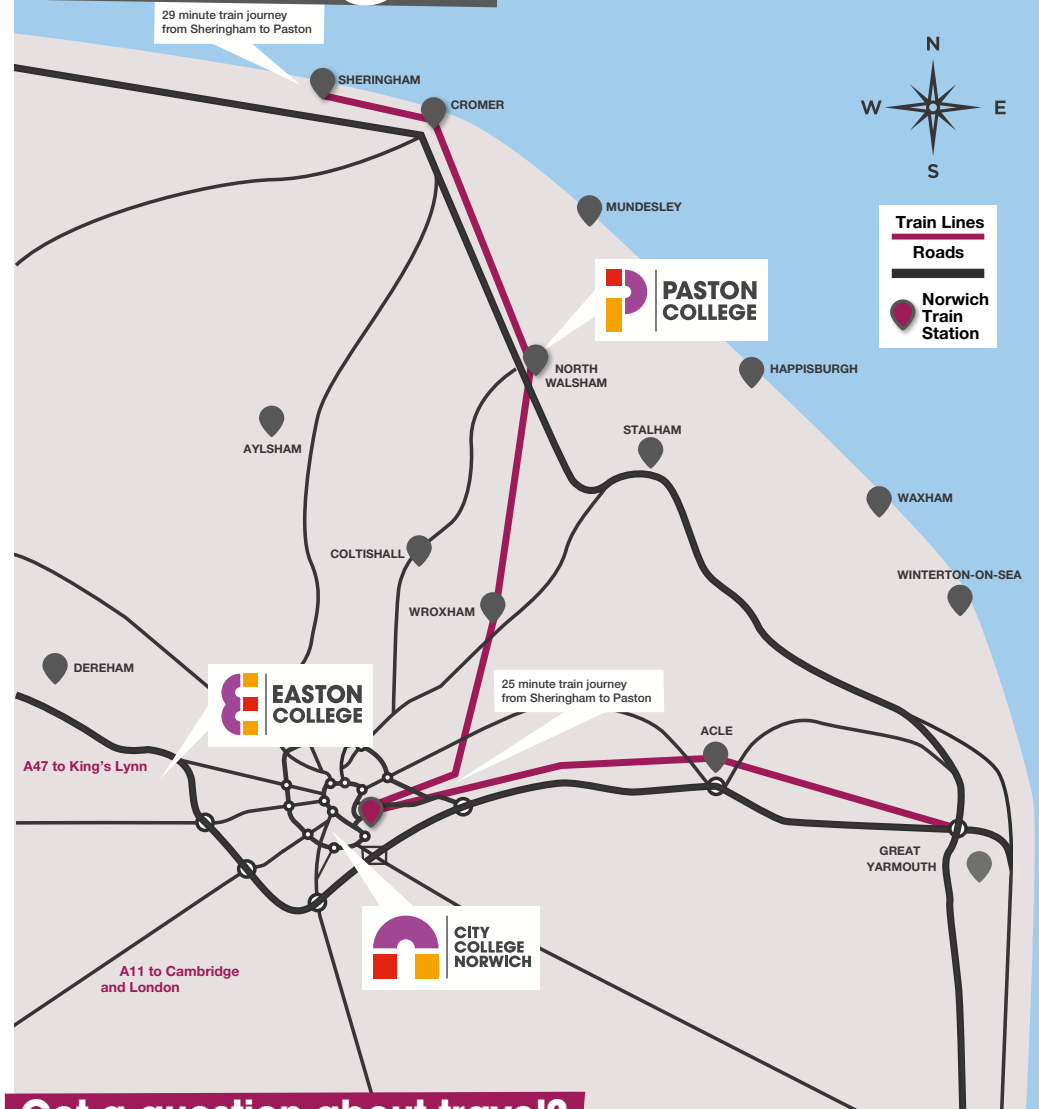
Our Wellbeing Team are here to help you fulfil your potential and maximise your physical and mental wellbeing with free confidential help and guidance for any concerns that you might have during your time with us. They can advise and signpost you to support available for a range of different concerns from mental health to financial worries.

There are a variety of ways in which you can access support at college: from speaking to a member of our team for one-to-one confidential advice and support, to accessing self-help resources through the intranet, and a referral to our specialist wellbeing services like the mental health adviser and college counselling service.



**Scan the  
QR code to  
learn more**

# Travelling to college

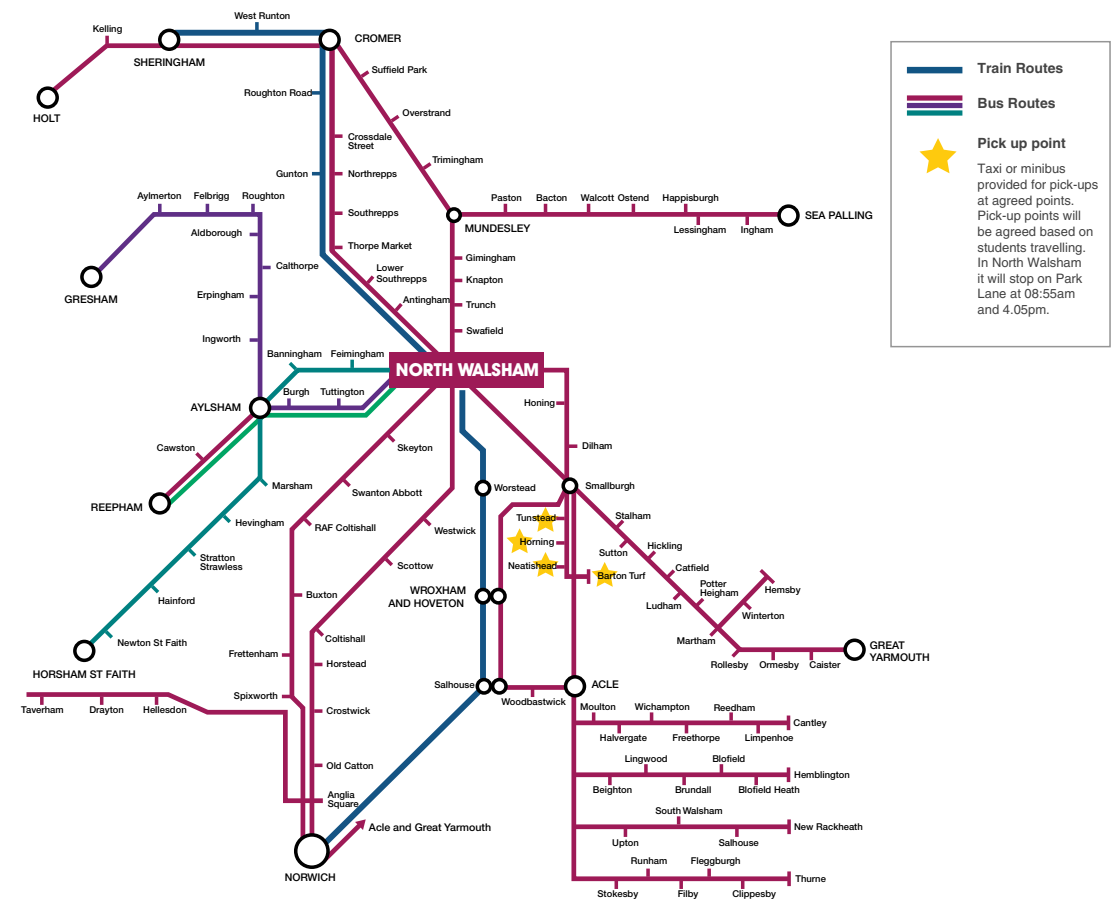


## Got a question about travel?

Get in touch with our Student Transport Officer by calling **01603 773607** or email us at: [citytravel@ccn.ac.uk](mailto:citytravel@ccn.ac.uk)

## Find out more...

For more information on getting to our college visit [www.paston.ac.uk/travel-guide](http://www.paston.ac.uk/travel-guide)



**Paston College is located just sixteen miles from Norwich city centre and each year we welcome students from all across Norfolk and neighbouring**

### From Norwich

Exit Norwich via the B1150 to North Walsham. Continue through Coltishall remaining on the B1150. As you approach North Walsham pass under the railway bridge, and continue ahead at the traffic lights onto Grammar School Road.

### From Cromer

Exit Cromer via the A149 towards North Walsham. Remain on the A149 for approximately 8 miles into North Walsham. Pass under the railway bridge and at the traffic lights turn right. At the next set of traffic lights turn left onto Grammar School Road.

### For The Lawns site

Turn left at the mini roundabout onto Park Lane, bear left and the entrance to Paston College can be found on the right hand side.

### For The Griffons (main reception)

Continue ahead at the mini roundabout, the entrance to Paston College can be found on the left hand side.

Lots more information available on our website [www.paston.ac.uk/travel-guide](http://www.paston.ac.uk/travel-guide) or scan the QR code on the left page.



# Our campus

Paston College is a unique and interesting place to study with a mixture of historic and modern buildings.

Paston is based in the heart of the historic market town of North Walsham. The college campus is spread across two sites that are a short walk away from each other.



## The Griffons site

The Griffons site is based on Grammar School Road and is home to our industry-standard Griffons Studios and the Griffon Theatre.

It is also the original Paston site which dates back to 1606 and is home to the historic Nelson Room where Lord Nelson studied before he joined the Royal Navy in 1771.

## The Lawns site

Based around the corner from The Griffons site on Park Lane, The Lawns is home to our Student Services Centre, Café and state-of-the-art Scarborough Science Centre.



# Work and industry placements



**Work placements are invaluable temporary positions designed to equip you with essential skills and knowledge in your chosen field. If you are studying our T Levels in Education and Childcare or Management and Administration then you will complete work experience as part of your course. While these placements are unpaid, the focus is on learning from industry experts to meet your course requirements.**

**During your placement, you will gain key skills such as:**

- **Time management**
- **Teamwork**
- **Problem-solving**
- **Communication**
- **Confidence**
- **Industry experience**

**While we encourage you to seek out your own placements, our dedicated team is here to support you every step of the way. You will meet this team during enrolment at college, where they will also assist you in preparing for employment through mock interviews and CV development.**

## **T Level industry placements**

For T Level students, a unique blend of classroom learning and practical 'on-the-job' experience is provided, lasting 315 hours (or 750 hours for childcare specialisations). These placements are designed to impart the necessary knowledge, skills, and experience required for success in the industry or to pursue further study or a higher apprenticeship. As a T Level student, you will be assigned a dedicated Industry and Work Placement Officer to assist in finding a suitable placement aligned with your career aspirations.

## **Want to find out more?**

Our Industry and Work Placement Team can be contacted by emailing [placements@ccn.ac.uk](mailto:placements@ccn.ac.uk) or calling **01603 773330**.

**Students have completed work experience and placements with companies such as**

HM Treasury  
KLM Royal Dutch Airlines  
Norfolk Tank Museum  
ATB Lawrence and Scott  
Alpha 7 Motorsport  
24-7 Motorsport  
Galliford Try  
Norwich Accountancy  
Toyota Norwich  
Renault and Kia Garages  
L and G Engineering





# Student life

## Students' Union

Our Students' Union (SU) plays a key role in the life of the college and represents the voice and interests of all our students. Every student automatically becomes a member of the SU once you have enrolled on your course, and through this you will receive the benefits of membership of the National Union of Students (NUS).

Throughout your time at college, the SU are here to make sure your voice is heard and your experience here is as rewarding and fulfilling as possible. Led by students, the SU advocates for and provides day-to-day support, advice and signposting to sources of support for all our students. The SU is a democratic organisation, with the president elected by students, and provides opportunities for you to represent your peers as a member of the Executive Officer team and at Student Parliament.

The SU organises a regular programme of events for students, including Welcome Week, as well as facilitating student-led enrichment through our clubs and societies.

The SU operates across all our college campuses, and at Paston College their desk can be found in the Study Centre.



**Lacey Ross**

SU President 2025/26

Paston alumni

## Trips and visits

Your learning at college will be enhanced by trips out of the classroom. You will experience the industries you are interested in action. Most recently, our A Level Art students enjoyed a four-day residential trip to London. They visited a range of galleries connected with their studies. BTEC Computing learners got hands-on with early programming, some iconic arcade games and the development of algorithms at The Centre for Computing History in Cambridge. Our English Language and Literature students watched Tom Hiddleston and Hayley Atwell on stage in Jamie Lloyd's Much Ado About Nothing on the West End and our Law, Sociology and Criminology A Level students also enjoyed a visit to the Royal Courts of Justice in London. They took part in a mock trial, putting the skills and knowledge they have learnt in the classroom to the test!

## Clubs and societies

Interested in exploring something new, developing a hobby or meeting other students? Our range of clubs and societies provide the perfect place to enjoy college life away from your studies.

At Paston College you could join our Music Club, get sporty with volleyball, netball, basketball and badminton, try out table tennis or have your say at our Debate Club.



# Ways of Working

As a student at our college, you will be expected to **make a commitment to study in-line with our Ways of Working, which our current students and staff strive to put into practice each day.**

**Our Ways of Working play an important part in making our college a place that is welcoming, open and successful, providing a positive experience for students and staff.**



**Kind and Curious**



**Open and Informative**



**Respectful and Fair**



**Collaborative and Inclusive**



**Consistent and Responsible**

# Paston College

## Courses



With a long-established reputation for academic excellence and a superb all-round student experience, explore the courses Paston has to offer. If you need further support our friendly team are available to help you. Email [admissions@paston.ac.uk](mailto:admissions@paston.ac.uk) or call **01692 402334**

### A Levels

Art  
Biology  
Business  
Chemistry  
Computing  
Criminology  
Drama and Theatre Studies  
English Language and Literature  
English Literature  
Environmental Science  
Extended Project Qualification  
Film Studies  
Further Maths  
Geography  
Graphic Communication  
History  
Information Technology  
Law  
Maths  
Media Studies  
Philosophy and Religion  
Photography  
Physics  
Politics  
Psychology  
Sociology  
Sport  
Textiles

### Career-focused courses

Academic and Vocational Progression  
Core Maths  
Creative Media  
Early Years Practitioner  
Health and Social Care  
Sport and Exercise Science

### Inclusive Learning

*These courses help you to progress to your next steps through our bespoke small group programmes.*

Go to page 56 or visit [www.paston.ac.uk/inclusive-learning](http://www.paston.ac.uk/inclusive-learning) to find out more.

### T Levels

T Level in Education and Early Years  
T Level in Management and Administration (Business)



# Easton College

## Courses



Set in over 160 hectares of countryside, Easton College is a wonderful place to study! Take a look at the exciting and specialist courses on offer. And if you need a hand finding the right course for you, get in touch with our friendly team by emailing [admissions@easton.ac.uk](mailto:admissions@easton.ac.uk) or call **01603 773008**

### Apprenticeships

*Apprenticeships offer great career opportunities, allowing you to earn and learn at the same time*

Visit [www.easton.ac.uk/apprenticeships](http://www.easton.ac.uk/apprenticeships) to find out more.

### Agriculture

Agriculture  
Agriculture and Rural Studies

### Agricultural Engineering

Land-Based Engineering

### Animal Studies

Animal Care  
Animal Nursing Assistant  
Step into Animal Studies  
T Level in Animal Management and Behaviour  
T Level in Animal Management and Science

### Construction

Construction Multi Skills

### Environmental Conservation and Countryside Management

Land and Wildlife Management  
Land-Based Studies

### Equine Studies

Equine Management  
Horse Care

### Floristry

Floristry

### Forestry and Arboriculture

T Level in Tree and Woodland Management and Maintenance

### Horticulture

Horticulture

### Inclusive Learning

*These courses help you to progress to your next steps through our bespoke small group programmes.*

Visit [www.easton.ac.uk/inclusive-learning](http://www.easton.ac.uk/inclusive-learning) to find out more.

### Outdoor Leadership

Outdoor Leadership

### Sport

Performance and Excellence  
Sport  
Sport Coaching and Development  
Sport and Exercise Science

### Uniformed Services

Uniformed Services





# City College Norwich Courses



**City College Norwich offers the widest choice of courses in Norfolk! Explore what's on offer at our vibrant campus and find the perfect course for you. If you're unsure on the best route for you, get in touch with our friendly team by emailing [admissions@ccn.ac.uk](mailto:admissions@ccn.ac.uk) or call 01603 773008**

## Academic Progression

*Specifically designed to help you progress onto the next stage of your education and are split into pathways appropriate to your next steps:*

Academic Progression Insight  
Academic Progression GCSEs

Visit [www.ccn.ac.uk/academic-progression](http://www.ccn.ac.uk/academic-progression) to find out more.

## A Levels

Art  
Biology  
Business  
Chemistry  
Drama and Theatre Studies  
English Language  
English Language and Literature  
English Literature  
Environmental Science  
Extended Project Qualification  
Film Studies  
Further Maths  
Geography  
History  
Maths  
Media Studies  
Photography  
Physics  
Politics  
Psychology  
Religious Studies (Philosophy and Ethics)  
Sociology  
Textiles

## Apprenticeships

*Apprenticeships offer great career opportunities, allowing you to earn and learn at the same time*

Visit [www.ccn.ac.uk/apprenticeships](http://www.ccn.ac.uk/apprenticeships) to find out more.

## Art, Design, Fashion and Photography

Architecture and 3D Design  
Art and Design  
Digital Art and Illustration  
Fashion and Textiles  
Fine Art  
Photography

## Automotive

Automotive Inspections  
Automotive Transport Maintenance  
Step Into Engineering and Automotive  
T Level in Maintenance, Installation and Repair (Light and Electric Vehicles)

## Business

Business  
Step Into Creative Media, Business and IT  
T Level Foundation Year in Business  
T Level Foundation Year in Marketing  
T Level in Management and Administration (Business Support)  
T Level in Management and Administration (Team Leadership and Management)

## Construction

Bricklaying  
Carpentry and Joinery  
Construction Multi Skills  
Electrical  
Plumbing  
T Level in Design, Surveying and Planning for Construction

## Digital

Digital  
Step Into Creative Media, Business and IT  
T Level Foundation Year in Digital  
T Level in Digital Support Services  
T Level in Digital Software Development

## Education, Early Years and Childcare

Caring for Children  
Early Years Practitioner  
Step Into Childcare  
T Level in Education and Early Years (Early Years Educator)  
T Level in Education and Early Years (Assisting Teaching)

## Engineering

Engineering  
Step Into Engineering and Automotive  
T Level Foundation Year in Engineering  
T Level in Maintenance, Installation and Repair (Mechanical and Mechatronics)

## ESOL (English for Speakers of Other Languages)

*These qualifications provide progression to vocational and academic courses as well as, employment and everyday life skills.*

Visit [www.ccn.ac.uk/ESOL](http://www.ccn.ac.uk/ESOL) to find out more.

## Hair and Beauty

Barbering  
Beauty and Spa Therapy  
Beauty Therapy  
Hair, Media Makeup Artistry, Theatrical and SFX  
Hairdressing  
Media Makeup Artistry  
Step Into Hair and Beauty

## Health and Social Care

Health and Social Care  
Step Into Health and Social Care  
T Level Foundation Year in Health  
T Level in Health (Adult Nursing)

## Hospitality and Catering

Hospitality and Catering  
Introduction to the Hospitality Industry  
Professional Cookery  
Step Into Hospitality and Catering

## Inclusive Learning

*These courses help you to progress to your next steps through our bespoke small group programmes.*

Visit [www.ccn.ac.uk/inclusive-learning](http://www.ccn.ac.uk/inclusive-learning) to find out more.

## Media and Games Design

Creative Media  
Creative Media Production  
Games Design  
Games Design and Development  
Step Into Creative Media, Business and IT

## Performing and Production Arts

Acting  
Dance  
Music  
Music, Performing and Production Arts  
Musical Theatre  
Performing Arts  
T Level in Events and Venues Technician

## Travel and Tourism

Travel and Tourism

## The Media Learning Company

*The Media Learning Company offers a unique chance to collaborate with like-minded people in an environment that reflects working in a media production company.*

Visit [www.ccn.ac.uk/mlc](http://www.ccn.ac.uk/mlc) to find out more.







# Adult courses

City Collge Norwich and Easton College offer a variety of courses to support you to upskill in your current industry, retrain to change career direction or learn a new skill or hobby for fun. They also offer employer-led courses for continuous professional development, skills bootcamps and bespoke courses created around the needs of your business. These courses vary in length and level and take place both in the daytime or as evening sessions.



## English for Speakers of Other Languages

City College Norwich

If English is not your first language and you want to develop your skills in speaking listening, reading, writing and grammar, then our ESOL courses are for you.

## Skills Bootcamps

City College Norwich and Easton College

These free, flexible courses are ideal if you are looking to progress in your current industry, want to change jobs, or if you're self-employed.

## Teacher training

City College Norwich

Our teacher training provision, Norfolk Teacher Training Centre, is the ideal route into teaching. Alongside professional and curriculum training you will spend 120 days in the classroom. Visit: [www.norfolkttc.org.uk](http://www.norfolkttc.org.uk)

## GCSEs and Functional Skills

City College Norwich

Gain qualifications and develop your career with our GCSE and Functional Skills courses  
[www.ccn.ac.uk/adultgcses](http://www.ccn.ac.uk/adultgcses)

## Leisure courses

Cookery

Art and Sewing

British Sign Language

Willow Basketry

Heritage Brick Skills

## Professional development

Basic Tree Inspection

Tractor and Forklift

Dog Grooming

Floristry

Gym Instructing

Bricklaying

Plus many more across City College Norwich and Easton College!



Scan the QR code to learn more



# Access to Higher Education



Want to study for a degree but don't have the qualifications?

Get to where you want to be with an Access to Higher Education course

Access to Higher Education (HE) courses offer an excellent starting point, helping you gain the skills and qualifications needed to progress to degree-level study and pursue your chosen career. Our Access to Higher Education Diplomas, validated by the Cambridge Access Validating Agency (CAVA), are designed to prepare you for university and beyond.

These flexible Level 3 qualifications are a well-recognised alternative to A Levels, designed with both career progression and employer needs in mind. Many of our diplomas align with Local Skills Improvement Plans and the broader demands of the local economy, preparing you for further study and employment in rapidly developing industries.

You will build study skills through our academic development programme, with guidance from your course leader throughout. Our dedicated Access to HE team will also support your university application, whether you continue your studies with us or apply elsewhere.

## Am I eligible to study?

To study an Access to Higher Education course you need to meet the following criteria:

- ♥ Aged 19+
- ♥ Have a grade C (grade 4) or above in GCSE English and maths



## Access to Higher Education courses:

Creative Arts

Computing (new for 2026/27)

Engineering

Humanities and Social Sciences

Land-Based Studies (Animal and Countryside Management)

Science (Health)



**Access to Higher Education Diplomas get you degree-ready in just one year!**

Scan the QR code to find out more or visit [www.he.ccn.ac.uk/access-to-he](http://www.he.ccn.ac.uk/access-to-he)

# Ready for a degree?

Study with us in the heart of Norwich



Degrees awarded by UEA



Small classes with maximum support from expert lecturers



We're flexible - our courses fit around your life and career

Unlock your potential with our wide range of course options

- Additional Needs and Disabilities
- Animal Science
- Aircraft Maintenance Engineering
- Childhood and Youth Studies
- Construction and Civil Engineering
- Creative Media
- Digital Technology
- Electrical and Mechanical Engineering
- Health and Mental Health
- Leadership and Management
- Social Sciences
- Sport, Health and Exercise Science
- Teacher Training
- Wildlife and Conservation
- Youth Work
- Zoology



Scan the QR code to learn more

**Continue your studies with us and receive up to £1,000 with our progression bursary!**

# Connect with Paston College

## Explore our website

Our website is your go-to hub for everything you need to know about our college. Whether you're curious about detailed course content, need guidance on financial support, or want answers to practical questions like how to get to campus or where to grab a bite, it's all there.

Take a virtual tour and experience the campus from wherever you are — get a feel for the vibrant student life, modern facilities, and the welcoming atmosphere that makes our college unique.

[www.paston.ac.uk](http://www.paston.ac.uk)



## Live Chat support

Got questions? We've got answers - in real time.

Our Live Chat feature connects you directly with knowledgeable course advisers who are ready to help with anything from course choices to application tips. Whether you're just starting to explore your options or finalising your plans, we're here to support you every step of the way.

Available directly on our website during business hours.

## Stay connected on social media

Want a glimpse into daily life at college? Follow us on social media to see what our students are up to, get behind-the-scenes campus content, and stay updated on events, deadlines, and announcements.

Join our community and be part of the conversation.

 **Paston College**

 **@pastoncollege**

 **Paston College**



# Open Events and campus tours

**If you'd like a real taste of what it's like to study at our college and discover the incredible opportunities we offer, come along to one of our Open Events. Held during the autumn and summer terms, these events are the perfect chance to explore your next steps and see what makes our college special.**



## At our Open Events you can:

- Explore your options and find out about courses you are interested in
- Take a tour of our campus and view our industry-standard facilities and equipment
- Speak to students and staff about life at our college and what to expect
- Find out about how to apply and ask about finance, travel and student support

Whether you're in Year 11 and ready to explore your options and submit an application, still deciding on your next steps and looking for guidance, or in Year 10 and eager to get a head start for the year ahead, our Open Events are designed to help you make informed choices about your future and find out how we can support your journey.

Find out more and sign up to one of our Open Events at  
[www.paston.ac.uk/openevents](http://www.paston.ac.uk/openevents)

## Upcoming Open Events

**Thursday, 25th September 2025**  
4pm to 7pm

**Saturday, 8th November 2025**  
10am to 1pm

**Thursday, 18th June 2026**  
4pm to 7pm

Can't make it to one of our Open Events? No problem! We're excited to offer campus tours, giving you the chance to explore our college. You will be shown around by one of our friendly Student Ambassadors or a member of our Customer Service Team, who will help you get a real feel for life on campus.

During your visit, you will explore our facilities, check out some of our study spaces, and see what makes our college a great place to learn and grow. Our Advice and Guidance Team will also be on hand to answer any course-specific questions you might have.

Book your tour now at: [www.paston.ac.uk/campustours](http://www.paston.ac.uk/campustours)



## Contact us

Paston College  
Grammar School Road  
North Walsham  
Norfolk  
NR28 9JL



t: 01692 402334

e: [pastoninfo@ccn.ac.uk](mailto:pastoninfo@ccn.ac.uk)

## Find us on social media



Paston College



@pastoncollege



Paston College



Scan the QR code  
to visit our website  
[www.paston.ac.uk](http://www.paston.ac.uk)



We are continually updating the courses we offer to meet student demand and industry needs. All information included in this prospectus is correct at the time of print in August 2025 but subject to change. For the most up-to-date information, please visit our website at [www.paston.ac.uk](http://www.paston.ac.uk)